

Wilbrahams' Warbler Spring 2021



Editorial

Welcome to the Spring edition of the Warbler our second digital edition. As I write this the Prime minister has just released his roadmap to take us out of Lockdown, and hopefully we can return to printed copies of the Summer Warbler.

HGV's or Heavy Goods Vehicles feature heavily, pun intended, we have two letters discussing them and an article mentioning them.

Despite the fact that there are signs to reduce the amount of HGV the problem has been apparently ongoing since 1993.

The Bottisham Medical Practice Participants group and the Medical practice itself both talk about Covid and give us an update on how the vaccination programme is going. As I write, they have completed the first four tiers. Please remember that there is also the villages Covid Support Group who are happy to help with prescriptions and offer social and practical support for those in difficulty.

Staying on the medical theme, Untold Stories relates to Hilary and Graham Burton who talk about pregnancy and genetics. Hilary is also one of those behind the Covid Support Group

As part of my daily activity allowance I have walked parts of the Wilbraham river. The one thing I had noted was how high the river has been between Little and Great Wilbraham. We have a letter and article from the Wilbrahams River Protection Society talking about chalk riverbeds and mapping the old course of the river.

Vanessa Nichols talks about singing having very positive benefits to mental health and the fact that it can be enjoyed by everyone of all ages in her article about the work of the Wilbrahams Community Choir.

In a View from the Garden Nigel Start talks about broad beans. I have to say one of my least favourite vegetables, however reading the article I may have to change my mind.

We have the usual reports from the parish councils, district councillor.

We have a lockdown version of Molly Malone wheeling her wheelbarrow through the Wilbrahams delivering produce and an Easter egg hunt and wordsearch puzzles on page 3.

If you have anything you want to say then please get in touch with us. Letters, articles or pictures are all acceptable. Whether it is by post to one of us or by email. Our contact details are listed inside.

John Torode

Great Wilbraham Little Wilbraham Six Mile Bottom



Contents

Contact details	2
Notice Board	3
Wordsearch	3
Letters	4
Covid-19 Support Group	6
District Councillor	8
Bottisham Medical Practice	9
Great Wilbraham PC	11
Great Wilbraham Primary School	12
Wilbrahams' Environment Group	13
Untold Stories	14
Christmas tree collection	15
Positive Thinking	16
Speed Awareness Campaign	16
HGV's	17
Photo competition	17
Over the Farm gate	18
St Nicholas Great Wilbraham Trust	18
Know Your Neighbour	19
Down to Earth on the Farm	19
Vegetable Flower and Produce Show	20
The Wilbrahams' Choir	21
A View from the Garden	21
The Wilbrahams' Memorial Hall	22
The Bird, the Bough and the Ivied Tree	23
Fr Miles Pateman	23
Tree Planting	24
WRPS	24
Red2Green	25
Wel-brahams	25
Gardening Club	26
Little Wilbraham & Six Mile Bottom PC	27
Regular advertisers	27
Beer Delivery	28





Public Service Contact Details

Emergency	Police, Fire or Ambulance 999
Community Support Officer	PCSO Julie Hajredini 101 ext. 7113441
The Surgery, Bottisham, Mon-Fri: 08:30 am to 6.00 pm	Enquiries/Appointments : 810030
Fulbourn Health Centre Mon-Fri: 08:30 am to 6.00 pm	Enquiries/Appointments : 880216
Out-of-hours / Urgent Care Cambridgeshire	NHS Direct 111

Great Wilbraham Parish Council

Chairman Stephen Bartlett 881096 ; chairGW@wilbrahams.co.uk
 Clerk Natalie Mulvey 07887813702 ; clerkGW@wilbrahams.co.uk

Little Wilbraham & Six Mile Bottom Parish Council

Chairman Dave Humphrey 07775 764 988 ; chairLW@wilbrahams.co.uk
 Clerk Hayley Livermore 07725080631 : clerkLW@wilbrahams.co.uk

County Councillor

John Williams 01223 880940 john.williams@cambridgeshire.gov.uk

District Councillors

Claire Daunton 07905473395 : Cllr.Daunton@scambs.gov.uk
 Graham Cone 07595361285 : grahamcone@aol.com
 John Williams 01223 880940 : john.williams@cambridgeshire.gov.uk

MP Lucy Frazer lucy.frazer.mp@parliament.uk

Wilbrahams' Warbler Editors

John Bramwell
 83 High Street, Little Wilbraham,
 Cambridge CB21 5JY
 01223 812426

Martin A. Gienke
 Icen Cottage, 46 Church Street,
 Great Wilbraham
 Cambridge CB21 5JQ
 01223 882426

John Torode
 7 High Street, Little Wilbraham,
 Cambridge CB21 5JY
 01223 812059
 07886103132

Anglican Church

Baptist Church,

www.re-new.me.uk : info@re-new.me.uk

Rev Alice Goodman 880337 : Lay Minister, Steve Mashford 882163

Peter Wells, 812388, pandawells@cheerful.com

Rev Keith Morrison, 813055 : Rev Alan Brand, 812558

Community Group Contact Details

Great Wilbraham Common Rights

Great Wilbraham Guild of Change Ringers

Great Wilbraham Primary School

GW Primary School PTFA

Great Wilbraham Oil Syndicate

Little Wilbraham Oil Syndicate

Volunteer Group

Weenie Warblers Mother & Toddler Group

The Well-brahams

Wilbrahams' Bridge Club

Wilbrahams' Community Choir

Wilbraham' Gardening Club

Wilbrahams' Memorial Hall

Wilbrahams' Scrabble

Wilbrahams' Sports Club

Steve Bartlett 881096, stephen.bartlett@mindworks.ltd.uk

Peter Sims, ptrs28@googlemail.com

Office: 880408

Eleanor Laws, eleanorlws@gmail.com

Chris Gurney, chris.gurney@tylers.net

Sue Lee, lwoilgroup@gmail.com

Pat Simpson pas49@cam.ac.uk

Sarah Fordham, 880698

www.thewell-brahams.weebly.com, well.brahams@gmail.com

Di Raikes, 881065

Gill Humphrey 811436

Jackie Beadsmoore, 880889

Shirley Morley, 880723

The Harmers, 880934

Roddy Tippen 880728

Disclaimer

While every care is taken in preparing the content of this magazine, the editors disclaim all warranties, expressed or implied, as to the accuracy of the information in any of the content. It also (to the extent permitted by law) shall not be liable for any losses or damages arising from the use of, or reliance on, the information in the form of articles, letters or adverts within the magazine. The adverts are provided for convenience only. We do not sponsor, endorse or otherwise approve of any information or statements appearing in the magazine. The editors are not responsible for the availability of, or the content located on or through, any advert.

Deadline for the Summer edition of the Warbler is

Monday 10 May 2021

Email contributions or adverts to;

bramwell@globalnet.co.uk

martin@gienke.net

johnboy_torode@hotmail.com>

Hand-written or typed contributions can be handed in or posted to the editors.

NOTICE BOARD

BIN COLLECTIONS

Black bins

Monday 8 March
Monday 15 March
Tuesday 6 April
Monday 19 April
Tuesday 4 May
Monday 17 May

Blue and green bins

Monday 1 March
Monday 15 March
Monday 29 March
Monday 12 April
Monday 26 April
Monday 10 May
Monday 24 May

GW Parish Council

The next meeting will be held on 18th March at 7.30pm via Zoom.
See full report on page 11

LW&SMB Parish Council

Meetings will be held, via Zoom, on March 11, April 8, May 13.
All at 7.30pm.
See report on page 27

DATES FOR SPRING 2021

Monday 1 March	St David's Day
Sunday 14 March	Mothers' Day
Wednesday 17 March	St Patrick's Day
Sunday 28 March	BST begins
Friday 2 April	Good Friday
Sunday 4 April	Easter Sunday
Monday 5 April	Easter Monday
Monday 3 May	Bank Holiday
Monday 31 May	Bank Holiday



Felix

I am a humble hedgehog called Felix
And I have a wonderful home
Thanks to foster mum Queenie I feel like a king on a throne
A clean bed is made for me every day
A treat to snuggle in a clean bed of hay
A plate of goodies is put out every night
One night Mr Fox came along, gave me such a fright!
I see I'm on camera, so I have to watch my P's and Q's
Don't want my bad habits on Facebook or Youtube
My female friend Glenda looked in
I won't let her stay, Queenie wouldn't want us living in sin
But with tasty tit bits put out every night,
I'm finding the hole to my home is getting a bit tight!

Greta Rees

HAPPY EASTER

Easter Egg Hunt

In this issue there are Easter Eggs, each with a letter. There are 9 more eggs to find. The letters make a word.



Solutions on page 28

Wordsearch : Flowers

18 flowers with clues given to work out the list of names, or just search.
Names are left/right, right/left, upwards, downwards or diagonal.

H	L	S	N	N	A	I	N	O	G	E	B
N	A	L	V	A	T	R	C	G	D	T	C
P	V	I	O	L	A	I	H	A	X	U	A
R	E	L	C	L	D	S	F	V	J	L	E
I	N	A	Y	R	C	F	M	F	N	I	S
M	D	C	S	N	O	W	D	R	O	P	O
R	E	Z	D	D	H	C	F	E	V	H	R
O	R	D	I	F	G	M	U	E	O	G	Y
S	M	L	K	J	U	L	W	S	T	A	S
E	T	C	L	E	M	A	T	I	S	K	I
K	A	O	G	I	X	A	E	A	O	G	A
K	N	I	P	P	E	O	R	C	H	I	D

1. It's the end of me in sticky paste (4)
2. Bit of a looker, the coloured part (4)
3. You would be good and healthy if in this (4)
4. If handled carelessly you could get sore (4)
5. Can be made into colourful chains (5)
6. If you host a party, you've got it (5)
7. In a chilli lacking strong colours (5)
8. Has it come singing from Amsterdam? (5)
9. Does this flower make music? (5)
10. Change occurs in early spring (6)
11. You can organise rich do with these flowers (6)
12. It's a big one arranged, often in baskets (7)
13. Fire with sea tossed about from South Africa (7)
14. Grows well with different climates (8)
15. No surprise if 'alf odd mix produces golden flowers (8)
16. Peter Pan's destination, not north, changed to provide fragrant blossom (8)
17. Promiser delivers a favourite with most people (8)
18. White flower, pods worn differently (8)

John Bramwell

Letters

Dear Editors

I am currently collecting information regarding the history of the Wilbraham Rivers for the Wilbraham River Preservation Society. Whilst I have access to a range of historical maps and some documents I have very few old photographs. Interestingly some major changes to the rivers took place in the period 1950-1970 - particularly the Great Wilbraham River as it passed through and along the edge of Great Wilbraham Common to Hawk Mill. If any villagers have any old photographs of the river in that era and they are willing to share or remember any details of the works done then I would love to hear from you.

Thank you

David J Lomas david@drcr.info 01223 811189

Dear Editors



There were three road works in the village in the week of 1 February. They were needed and that was fine, but on each occasion the poor positioning of Road Closure signs and the inaccuracy of one of them created confusion, even chaos, and danger at the junction of Mill Road and High Street.

On 5 February, there were two road works: one in High Street to fill a large hole, and one in Mill Road to deal with a burst water main. Two Road Closure and Diversion signs were erected in the High Street, both at the end of Mill Road.



In front of you, the combination of signs shows that Mill Road is closed, but that it is open for diverted traffic. In the far distance you can perhaps just make out the road works in High Street. Traffic, particularly heavy lorries, encountering the Road Closed and Diversion signs could see the distant road works, and many seem to have decided that it was High Street that was closed. They turned left and then half way along Mill Road, they reached the 'Road Closed' sign and cones in front of the actual road works. Since a 3-point turn in an HGV on a narrow road is impossible, drivers moved the sign and the road cones, and drove across the verge and through the limited gap they had made.

Some of the traffic that turned left went around the triangle and came back on to High Street. But there were more problems.

The Road Closed and Diversion signs on the other corner of the triangle gave the right directions but were probably positioned too far back to alert vehicles coming from Fulbourn in time. Many drivers did not see the signs until they had started to turn, and a surprising number of those carried on turning. Some drove around the triangle and back on to High Street, but most carried on down Mill Road and did not come back. As can be seen in the photo, only one lane of Mill Road on the corner was open and that was for traffic exiting Mill Road. Turning into it was a serious hazard and we were fortunate that there was not an accident.

On being alerted to the confusion, Councillor John Williams reported the matter to the streetworks team at street.works@cambridgeshire.gov.uk. Probably any of us could have done that. There is also a website where the County Council publishes forth-coming roadworks, but I guess not many of us look there.

I have learned that the Utility carrying out road works is responsible for erecting signs in accordance with regulations which, I believe, include the requirement that those signs should have a reporting number on them; the ones in High Street did not. More surprising was to discover that the County Council can only oversee the erection of signs, although it can fine the Utility if the signs do not meet the regulations. All too late for this occasion.

And finally, this is the second burst water-main under Mill Road in less than a year. HGVs weighing 44 tonnes travel regularly along that country road despite a sign indicating that it is unsuitable for HGVs. No-one seems to be joining the dots.

Kind regards, David Richer, 52 High Street, GW.

Dear Editors

We have been told constantly that HGVs and car transporters have the right to use Mill Road for access to the Industrial Estates in Fulbourn and Road Engineers have inspected and approved the road. No one has ever produced proof of any of these statements so I wonder if we are being misled. I think our PC and all villagers are entitled to view the evidence on which their claims are made. I take it that they are in the form of official reports so an official request could be made.

Balsham Road is a well-maintained wide road with an interchange designed for HGVs and the route to the industrial estates shows no sign of damage to road surface, verges, or private property right through to the industrial estates which, it should be emphasized, are all in Fulbourn.

The original A11 design did not have a bridge at Mill Road so the intention was to use Balsham Road. That is why we still have dangerously short slip roads with constant accidents at Mill Road Bridge. Mill Road is an unclassified country road with many places legally too narrow for two HGVs to pass safely and well under the minimum width required. The 173-year-old disused railway bridge has been professionally hidden from public view, but the brick built arch deck is still there. Over the 28 years since the A11 was completed the verges have been constantly eroded such that today the HGVs tyres have to run on hard core in the verges to pass.

It is obvious that not even a medium sized van can turn left without crossing onto the wrong side of the High Street. This has always been the case and one day could result in a fatal accident judging by the speed of vehicles travelling along High Street.

In spite of many promises to do something we have always had a "wall of silence" and I wonder if this could be an indication that something is not right here. Can anyone truly believe that Mill Road was officially and correctly inspected by Professional Road Engineers and passed fit for HGVs in c 1993 and, even more unlikely, for 44 tonne HGVs and car transporters in c 2001?

What do the readers think?

Does the Planning System have a duty of care to residents whose quality of life is affected by these decisions for the rest of their lives, and can we ask for proof this duty is being carried out?

Roger Burton.

Dear Editors

The objections to the amount of HGV's using our small unclassified country roads have been ongoing since the A11 was duelled in 1993 and nothing has been done about it. Over the last two years or so this traffic has increased enormously and every day we witness danger to people and property on a scale totally unacceptable.

Everyday and all day, my family and I and my property are put in danger from HGV's coming down Mill Road and turning left towards the Fulbourn Industrial Estates. A few manage to turn by going onto the wrong side of the road but many mount the footpath. One day one could well crash into the electricity sub-station opposite or my property. Nothing, not even a medium size van or car, can turn legally at that corner. How has it been allowed to happen and why has it been ignored for 28 years or so?

The 6 am rush every morning has headlamps full beam shining into bedrooms and the noise, the smell, the sheer intimidation is totally unacceptable.

Many of you will have seen my posting on the Wilbraham Community Facebook Page on the 1st Feb. I also have a collection of shocking videos and photos to prove it. My daughter, along with many other school children, have to walk the footpaths to the bus stop as an enormous HGV grinds its way past on the very footpath she has to walk on.

Surly this cannot be acceptable in any planning guidelines and it is one of the many reasons why there is something wrong with these planning decisions.

There is no footpath to the Cart Loge Nursery and the roads are far too narrow and continually flooded after just a small amount of rain. This flooding and damage are apparent all the way from the A11 to the industrial sites and is very dangerous for other road users.

We have seen many accidents at this junction and the next could be fatal judging by the speed of most of the traffic.

Why has this been allowed to happen and when have the people who live on the route of these HGV's been informed of the intention of the planners and our representatives over the years? We are continually told that planning is open and transparent and that planners have a duty of care to those residents who will be affected by their decisions.

There is something lacking in these planning decisions and I fully support efforts on our behalf of our PC Chairman and others to back some form of enquiry into how both villages have been quietly put into this dreadful position.

Gareth Burton 44 High Street, Great Wilbraham

The Anne Ward and Benstead Charities for Great Wilbraham

Last year the trustees for the Anne Ward and Benstead Charities were extremely grateful to receive financial gifts from a local resident and the PCC. This enabled the trustees to increase the amount distributed just before Christmas. The sum gifted to each recipient is not great; the total amount distributed normally, each year, is about £220. This is the normal annual income. These are extremely unequal times and any problems are exacerbated by Covid. If you are about to consider which charitable organisations to support please include us in your calculations. If you feel you know someone who might benefit from a small financial gift please let us know. And for further information please make contact.

Tony Goryn, Secretary. 07751 281341 tonygoryn@icloud.com

Wilbrahams and Six Mile Bottom COVID-19 Support Group

February 2021

The Covid-19 pandemic continues to affect all our lives, although hopefully, with the vaccination programme there is now light at the end of the tunnel. Our local cases remain high, though starting to fall a little and the situation in Addenbrooke's hospital remains very serious. In the week to 3 February there were 24 people who tested positive in our ward (Fulbourn and Teversham) and there are likely to be many others who are carrying the infection asymptotically. In South Cambridgeshire as a whole, there were 267 cases in the week to 8 February and 16 deaths were reported. Latest healthcare data (as on 30 January) also shows that 132 people with Covid-19 were admitted to hospital in one week; there were 211 patients in Addenbrooke's Hospital with 48 being on ventilators. It's also clear that this rise is not confined to young people; over sixties are affected at a similar rate.

Please, please follow the current national Covid rules and stay at home, except for defined essential activities. Please also get a vaccination as soon as it is offered.

Covid-19 support group

The Covid-19 support group has continued active throughout all this time – we have recently checked and reviewed the list and are delighted that we have 40 volunteers spread across the three villages, all willing and able to provide help to their neighbours. Our 16 Local Contacts together cover all the village homes and act as the first port of contact for requests (details at the end of this article).

We would like to thank all these volunteers, who together have looked out for the needs of our residents and provided much needed social and practical support.

Information

Please keep an eye on the Village website <https://www.wilbrahams.co.uk/>, look at the Wilbraham Community Facebook Group (<https://www.facebook.com/groups/313983712127427/>) or contact the Covid coordinators for information. The South Cambridgeshire District Council (SCDC) website contains current rules and available support <https://www.scambs.gov.uk/coronavirus/>.

Practical support

We can provide support including giving advice, helping with essential shopping or prescription pick-ups. If you are having difficulty with self-isolation, hardship due to loss of income, or problems with home-schooling please contact us and we may be able to help you access support.

If you have tested positive or been in contact with someone who has tested positive please do not go out as it puts others at risk. Contact us and we will happily run errands for you.

Support grants are available to cover lost income due to having to self-isolate: <https://www.scambs.gov.uk/coronavirus/self-isolation-payment/>

Prescriptions

It is useful if people can restrict their visits to pick up prescriptions as far as possible. Currently residents can ask to have prescriptions delivered to the Great Wilbraham Post Office. Bottisham Medical Practice has recently started a delivery service to patient's own homes. You can find information and a form to complete to use this service on the Practice website <https://www.bottishammedicalpractice.nhs.uk/dispensary-service-important-update>. If you need an urgent prescription, please ask your Local Contact. If you are having difficulty with prescriptions, please call the Practice and ask for advice.

Vaccination

Our medical centres are working closely with the local Covid-19 Vaccination Programme and we are very pleased to hear that many older residents have now received their vaccinations. The practices use their patient lists, including patients who are in clinical priority groups, and are contacting patients when it is their turn to be vaccinated. However, instructions change from time to time. For the latest information and answers to your questions, including how to get help with transport to a vaccination appointment, please look at the Practice website on <https://www.bottishammedicalpractice.nhs.uk/covid-19-vaccination-programme>. We will also keep the village website up to date.

At the time of writing, anyone who is over 70 or in the clinically extremely vulnerable group is asked to call their GP if they have not had their first Covid-19 vaccine.

Social support

One of the hardest things to bear throughout all of this has been the feeling of isolation and not being able to see friends and family. There are a number of ways we are trying to help:

Telephone calls: we can arrange for someone to call you regularly to chat and maintain social contact. (Speak to your Local Contact).

Virtual coffee mornings: Thursday mornings at 11.00 by Zoom. (Contact Hilary Burton to join).

Know Your Neighbour talks: Tuesday evenings from Tuesday 26 January. (Information on village website or contact Andrew Carter).

Support from South Cambridgeshire District Council SCDC provides support for local residents. Look at their website for information on support for vulnerable residents, hot food schemes, home schooling technologies, heating grants, emergency supplies, loss of income during self-isolation and the vaccination programme. Councillor Claire Daunton works closely with the Covid support group and can be contacted for advice: cllr.daunton@scambs.gov.uk

Johnson Bede and Lane Charitable Trust

The Trust is available for everyone in Little Wilbraham and Six Mile Bottom now and in the months ahead. It offers help for a variety of things but during the current circumstances specific help includes:

Education Support – help with the cost of home education (electricity, printer ink, paper, educational toys and games and other resources)

COVID Support – help with essential food and household bills. If you would like support, please contact the Trust (all enquiries are in the strictest confidence):

COVID Support – help with essential food and household bills. If you would like support, please contact the Trust (all enquiries are in the strictest confidence):

Karen Ostenfeld (Secretary) 07828 601994
info@jbltrust.co.uk

Juliet Carter (Treasurer) 07808 835081

Hilary Burton, Andrew Carter

COVID-19 Volunteer Group Local Contacts

Coordinators: Great Wilbraham: Hilary Burton, Tel 07710787917 email hb384@cam.ac.uk.

Little Wilbraham: Andrew Carter, Tel 07749 046499 email apc48@cam.ac.uk

Great Wilbraham	Contact	Phone number
The Lanes, Chapel Meadows, Angle End (to Post Office)	Joy Bray	07707 816467/01223 880415
Angle End (Post Office to High Street), Bensteads End	Helen Clarke	07815 105 092
Ratford's Yard	Julia A'Court	07789 512 428 / 01223 881539
Temple End, Butt Lane	Lorna Carr	07502 081528
Church Street	Ian Cumming	01223 881 787 / 07773 332 776
Church Close	Emily Oliver	07789438393/01223 779141
Toft Lane & Toft Way, Squire's Field	Alison Hargreaves	07941 871 536 / 01223 880 491
High Street Upper (above Toft Way)	Kat Williams	07795497022
High Street Lower (below Toft Way), Mill Road	Ngaio Vince-Dewerse	07986224657
Station Road & Frog End	Aga Hextall	07886 946 022
Little Wilbraham	Contact	Phone number
Rectory Farm Road, Church Road, Six Mile Bottom Road, LW	Andrew and Juliet Carter	01223 812 065 / 07749 046 499
Primrose Farm Road, Orchard Close and Manor Close, LW	Claire Daunton	01223 811 207 / 07905 473 395
High Street, LW	Kathy Stringer	07904943286
High Street, LW	Rebecca Lomas	07718 899471
Alms Houses, LW	Verity Gow	07903 666 492
Six Mile Bottom	Contact	Phone number
Six Mile Bottom	David Gill	01638 572 037

‘We’re Following the ...’ Evidence

There’s nothing like a newspaper headline for bringing on large numbers of texts, emails and phone calls, at all times of the day. So it has been recently, with the decision on the relocation of the Water Treatment Plant and the announcement concerning the proposed development of 8,000 homes in Six Mile Bottom. I’ll deal with the last point first.

When one mentions ‘the call for sites’ either in a piece like this or in speaking to someone, there’s an almost instantaneous inner reaction - oh dear, done it again, not been clear.

So, let me be clear, as interviewees on the ‘Today’ programme say: the call for sites is part of the process of putting together the Local Plan. I would recommend this set of slides from a recent webinar which puts the whole thing into context very clearly.

<https://greatercambridgeplanning.org/media/1452/gclp-autumn-webinar-slideshow.pdf>

South Cambs and the City, working as a joint planning service, are bringing together a very large body of EVIDENCE that will help shape where housing, jobs, sites of recreation, sites of landscape, infrastructure are to go for the period 2030-2040. This is a statutory process and has to follow certain regulatory parameters, with a timetable which allows for wide consultation at several key stages along the way. The ‘call for sites’ is part of that. Both Councils are required by central government to invite owners of land across the City and South Cambridgeshire to put in spaces for consideration of development.

We now have 658 spaces collected as a result of this call. The location of all of those spaces with their size and the name of the owner or agent has been published.

Here is the link to the interactive site with these details

<https://www.greatercambridgeplanning.org/emerging-plans-and-guidance/greater-cambridge-local-plan/document-library/site-submissions/>

I can’t stress enough here that if you see a site on the map it does NOT follow that it will be built on. Each of the sites now goes through a rigorous process of assessment for suitability taking into account a range of issues including location, infrastructure, housing need, the economy, sustainability, utilities, biodiversity. Some sites will be chosen because the EVIDENCE for them will be there: many will not. Last time this exercise was carried out under 10% came through. There are a number of related questions, one of which is: is it better to have two or three really large sites where sustainability and infrastructure can be built in from the beginning rather than many smaller sites. But that is one of many questions that will be posed and tested and for which EVIDENCE will be weighed.

Already some of you have contacted me about the sites in Great and Little Wilbraham and Six Mile Bottom. These vary in size enormously from the proposal for a completely new large settlement in Six Mile Bottom with, it is said, a station coming alongside, to a small site in Great Wilbraham and a very small site in Little Wilbraham. Each will be subject to rigorous examination and to EVIDENCE-gathering.

Let’s be clear, as they say: the driver for this whole process of housing development is central government’s targets for housing.

Just as we might be rather tired now of hearing the word ‘unprecedented’, so we might also be a little jaded at hearing how Cambridge and the area around it is a ‘major growth area’. But it is, even with the pandemic, and will continue to be so. One’s views on this depend on where one starts, I suppose. If living close to a city with a significant international reputation for excellence, with good facilities, makes our villages both more precious but also more lively, then we will want to have the best of both worlds: even better facilities with even better links to London and airports and to other countries. But then one has to think about economies of scale: the city grows as it thrives and more people want to come and live here. The only way one can harness the benefits is by maintaining and controlling the growth: but growth there will be. If on the other hand, living near Cambridge is no benefit to you, then you will view growth differently. But I don’t believe any of us wants to live in frozen or dying communities. We want to have a say in how they evolve for our benefit.

The most important point in all of this is to follow the EVIDENCE, and to be well informed about the EVIDENCE being put forward. The District Council holds very regular consultations which I always try to write about in the *Warbler* and on the website and in reports to the Parish Council; and I always try to encourage people to participate in consultations. There will be public consultation later this year on sites that might be possible, then the draft Local Plan itself. There will be the Examination in Public by an independent Planning Inspector before the Plan is debated and adopted by the full council. I will continue to update residents and you can always email or ring me – details below – with queries.

Finally, or almost: the relocation of the Water Treatment Plant which is a national government infrastructure project. The choice by Anglian Water of the Honey Hill site for the relocation plant was announced on 28th January. We, Cllr John Williams and I, opposed that choice for various reasons, not least problems of transport and engineering. We continue in our stand on the choice and are concerned about many issues. There are still different phases of consultation to go. We must also continue to hold Anglian Water to account. They have promised much on mitigation measures and infrastructure benefits, but we cannot know for sure if there is money there to bring these to fruition. It is important, however, to remember that this development has been in the offing for more than five years now – discussions started in

2015 – and that, even if the development does go ahead, the new plant would not be operational before 2028 by which time the current plant alongside the A14 would need to be upgraded significantly to cope with growth.

I can't end this piece without mentioning lorries, or wagons as some call them, or HGVs. As many of you know, my colleague, Cllr John Williams, has long been campaigning on these, particularly on weight restrictions. Over the last two years I have joined him in gathering evidence and working with local businesses which generate lorry traffic. We have reported to both parish councils (with which we maintain good and close contact) and others concerned locally. There is much over which we have no control (such as who or what is allowed to use our roads), but where we can, we work to make a difference.

Councillor Claire Daunton: cllr.daunton@scams.gov.uk, 07905 473395

AND, ONCE AGAIN, THREE CHEERS FOR OUR OUTSTANDING COVID VOLUTEERS

Bottisham Medical Practice Patients' Participation Group

Covid Vaccinations: These are proceeding well, due to the hard work of the staff, who still have their usual patient care duties to do, and the volunteer marshals. We owe them all our thanks. It has been a major effort to organise finding and equipping suitable premises and getting the supply of the vaccines. GP practices are grouped into Primary Care Networks, with Bottisham being in the Cambridge North City along with another five practices including the East Barnwell Health Centre, hence using it as a vaccination site. Whether having had the vaccine or not we are still advised to follow government guidelines and remember hands, face, space.

Dr Higham : The Practice gave a fond farewell to Dr Higham on 5 February, who has now retired after nearly 21 years here at the practice. He will be very much missed by both staff and patients. We would like to wish him well in his retirement.

We would like to welcome our two new GPs Dr Leveritt and Dr Kanagasabapathy to the practice.

Dispensary: Please remember the practice are still operating a 5-day turnaround for repeat medication to ensure safe working in the dispensary and manage increased demands.

Flu vaccinations: The practice is still encouraging patients to have flu vaccinations. If you have still not had one and are eligible, please do contact the practice to make an appointment.

Information about NHS 111: The health adviser taking your call will follow very strict pathways, a flow chart. If this suggests that the patient needs another service they can put you through to clinical advisers for clinical support. Clinicians in the clinical assessment service are generally a GP.

The number of call handlers on the 111 service has been increased.

When you call you will be given the option of a video consultation or telephone call. If the health professional is concerned then you could be called in for a face to face consultation. The consultants have the same information that has been provided to 111 and have access to relevant patient records. If a patient is given a time slot for this and the time is not convenient, then an alternative would be offered.

A & E: If a visit to A & E Department is felt to be required then you will be given a time slot for that by the 111 service, who can also book patients into the hospital that is closest to them if away from home. The 111 service would support the patient if they had transport issues, maybe offer a home visit from their GP. Do not attend A & E directly unless the patient is in a life-threatening condition.

Appointments: The Practice will continue to work as it has been doing since the start of the pandemic and remain available for all health problems. Please remember your face masks when attending the practice.

Equipment: We are pleased to be able to report that the Doppler Machine has arrived much to the delight of Nurse Carol. With thanks to our generous patients.

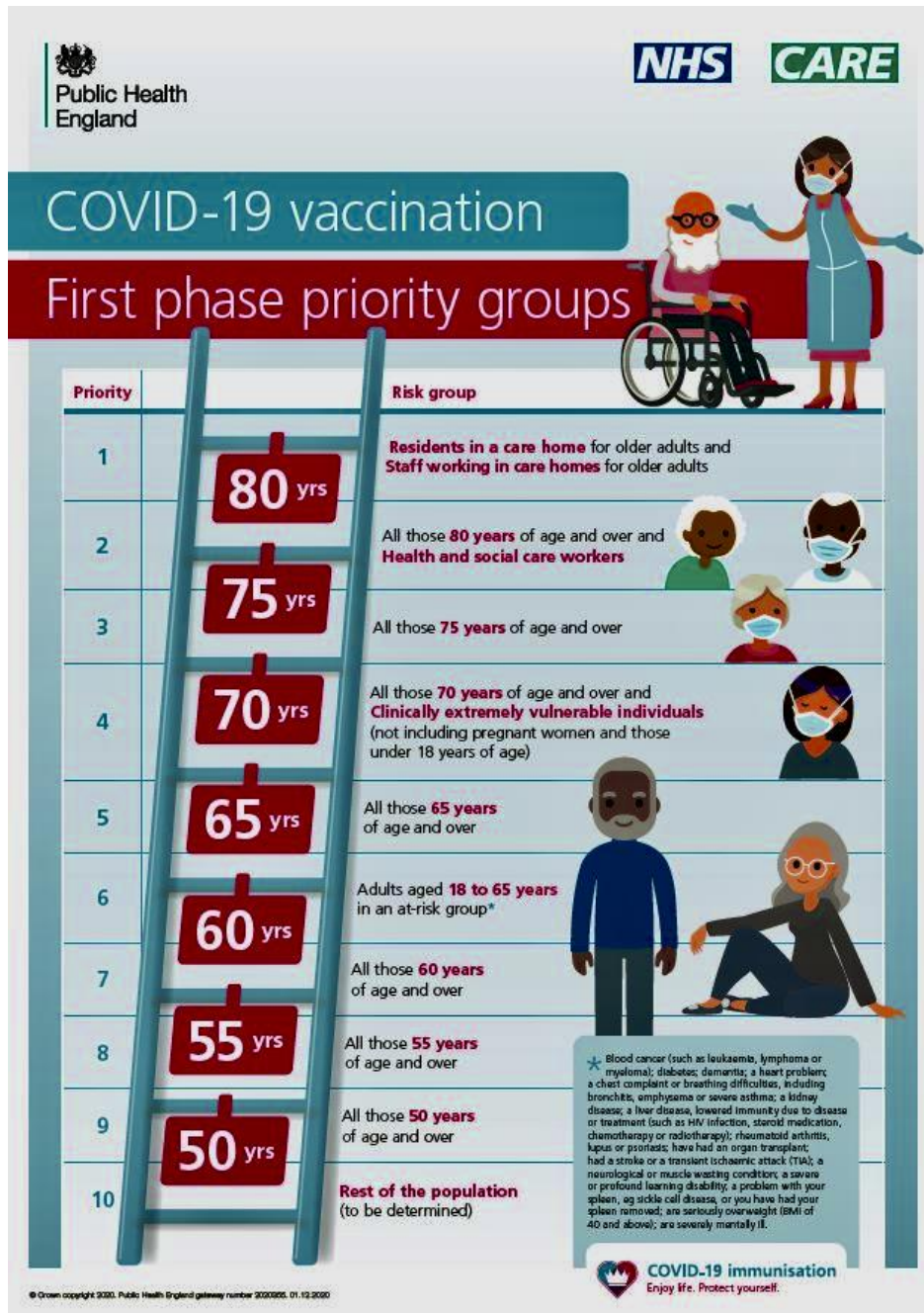
Next meeting: To be arranged and will be held virtually via Zoom. If you would like to join the zoom meeting please email our chairman at s.j.gilson@btinternet.com who will send you a meeting invite.



Bottisham Patient's Participation Group

COVID-19 Vaccination Programme – Update from Bottisham Medical Practice

In the last edition of the magazine we were pleased to announce the start-up of the COVID-19 vaccination programme in conjunction with our local Primary Care Network. At the time of writing this we can confirm that we have now vaccinated over 5000 patients within the network which is an amazing achievement in just three weeks. Staff across the Network have come together to deliver a programme at a large scale to achieve this and are hugely grateful for all the staff across the network who have worked so hard to get our most vulnerable patients vaccinated. We could not have done this without the help of our dedicated volunteers who played a key part in supporting the logistics of running the clinics and we thank you all.



Cohorts completed so far are cohorts 1-4 which includes all those over 70 years old, residents and staff working in care homes, all frontline healthcare workers and patients in the high risk “shielding” category also known as clinically extremely vulnerable.

Housebound patients within the at-risk groups will be done by the District Nursing team in the coming weeks.

The order in which the vaccine is offered to patients is decided by Public Health England and the Joint committee on vaccination and immunisation (JVCI). We have no control over to whom we offer the vaccine and must strictly adhere to the order of priority.

The next group of patients will be cohorts 5 & 6 which are all those over 65 years of age and those aged 18 – 65 years of age with at risk health conditions. As soon as we have a date for the next vaccination clinics these will be publicised.

Along with Stevenage there are now additional local hubs in the area including the Grafton Centre and Newmarket racecourse. It continues to be the case that patients could be called to have vaccinations at these local hubs as well as via the surgery, we have no choice over where you are invited to be vaccinated.

Importantly, patients aged 70 years and over and those within the “shielding” group who have not yet been vaccinated against COVID and who would like to be are being asked to contact the NHS to arrange a vaccination. The easiest

way to arrange a vaccination is through the national booking service which can be accessed at www.nhs.uk/covid-vaccination. The system allows patients to choose a time slot and location that suits them. Anyone unable to book online can call 119 free of charge, anytime between 7am and 11pm seven days a week.

For further information and Q&As regarding the vaccines please visit our website <https://www.bottishammedicalpractice.nhs.uk/covid-19-vaccination-programme>

Great Wilbraham Parish Council

Co-option of New Parish Councillor – Emma Gant

The Parish Council is pleased to announce that at the January meeting Emma Gant was co-opted as a Parish Councillor. Emma is a qualified Social Worker and has lived in Great Wilbraham for 14 years. She has always taken an active part in village life and with children attending the Primary School she supported the Parent Teacher Association and served as a parent governor.

Emma is acquainted with the social issues that affect many families in Cambridge and as a Family Social Worker for Suffolk County Council she supports families in the Forest Heath area. She is aware of how wider issues such as poverty, violence against women, public transport, and cuts to services are contributing to people's mental distress. Emma would like to use her role to inform and involve residents of Great Wilbraham with the work of the Parish Council and to influence local policies to rectify discrimination.

Members of the Parish Council are looking forward to working with Emma.

Precept Set for 2021 – 2022

At the January Parish meeting a precept of £30,188 was agreed for the year 2021-2022.

Local Highway Initiative Application

Cambridgeshire County Council highways team have completed the feasibility summary report for the GWPC local highways improvement application 2021-2022 to introduce speed calming measures in the village. On Monday 8th February, Mike Smith, attended the panel meeting to present the application and answer any questions. Members are grateful to both Mike and Alister McFarquhar for all their support with the speed awareness campaign. The Parish Council have committed £10,000 to support this work if the application is successful.

Road and Street Maintenance

Please be aware that you can report problems on the highways including potholes, kerbs, verges, flooding, hedges and trees, public rights of way, road markings and signs and traffic signals on the County Council's website <https://www.cambridgeshire.gov.uk/residents/travel-roads-and-parking/roads-and-pathways/roadworks-and-faults/>. You can also use the highway reporting tool to track progress on a fault you have already reported. Enter the reference number for your fault or the location into the top right-hand box on the map to view updates.

Parish Council Meetings via video conferencing

Sadly, due to the continued restrictions Great Wilbraham Parish Council will continue to hold their meetings via Zoom. If you would like to join a virtual meeting, the ID and password can be found on the meeting agenda.

Meetings of the Parish Council are not public meetings, but members of the public have a statutory right to attend meetings of the council as observers. However, as part of its community engagement, Great Wilbraham Parish Council includes on the agenda 10 minutes for public participation when members of the public are invited to speak. To help with the smooth running of the virtual meetings we do ask for any questions to be submitted in writing to the Chairman of the Parish Council or the Parish Clerk no later than 24 hours before the scheduled start time of the relevant Council or Committee meeting.

If you would like any help in joining a GWPC meeting, please do not hesitate to contact the Clerk.

Community Support

The Parish Council is always keen to support community activity in the village and is most grateful to anyone who has done things to foster community cohesion in the past year.

Great Wilbraham Parish Council has money available to be awarded in grants to organisations for projects that will be of benefit to the residents of the Parish. If you are a part of a community group or project and feel you have a funding need, please look at the policy, which can be found on the www.wilbrahams.co.uk site to see if you meet the criteria to apply for a grant from the Parish Council. If you have any queries, please do not hesitate to contact the Parish Clerk.

Overgrown hedges

The Parish Council often receives complaints about overgrown hedges obstructing pavements and public footpaths around the village. These obstructions can be a real hazard to the partially sighted and users of wheelchairs and pushchairs.

Please can all residents in Great Wilbraham check their hedges and other shrubs to make sure that they are not overgrown. If your hedge is, please take the time to cut back any sections, which do cause obstructions for pedestrians, or visual impediments to drivers and/or road signs.

Next Council Meeting

The next scheduled full council meeting will be held on Thursday 18th March at 7.30pm via Zoom (if restrictions are still in place). All residents are very welcome to attend.

Please check the Parish website for regular updates - www.wilbrahams.co.uk

Great Wilbraham Parish Council Addendum



Mysterious white arrows and markings have appeared on the Angle End pavement. The Parish Council clerk asked about them and Highways are still investigating.

Eleven street lights were due to be replaced in Great Wilbraham. (1 George's Way, 1 Angle End, 2 Church Street, 5 Toft Lane and 2 Toft Way). One of the workmen said the new LED lights are cheaper to run and last much longer.

Concerning the tree work in Church Close/Toft Way, Claire Daunton has advised that all the trees in Church Close (SCDC Housing land) were assessed for work earlier in the year: two have now been pruned as requested - the two closest to parking areas. The GWPC Clerk had a report from the Housing Services officer who manages this

aspect of Housing. The tree that was felled had originally been assessed for a crown lift, but on detailed inspection its roots were found to be very close to a drain and to the foundations of a house. In addition, there were several wounds at the base of the tree that would have weakened the tree and would pose problems for the future. It was therefore suggested by the tree surgeon to remove the tree and plant a replacement in a more suitable location (i.e. away from the property and nearby drains). This advice was acted on.

Martin Gienke



Great Wilbraham CE (VC) Primary School

Headteacher: Mr Richard Brown BEd (Hons) NPQH

Great Wilbraham C of E Primary School, Church Street, Great Wilbraham, Cambridge, CB21 5JQ, 01223 880408

Last term I shared how the school had prepared and adapted to reopen for the whole school. Due to the diligence of the staff, the exceptional behaviour of the children and the support of the parents, we were able to remain open for the whole term without major incident and no 'bubble' closures.

Over the Christmas holidays it became clear that the start of 2021 was going to be much more challenging than the end of 2020. The staff and I spent a day preparing for all children returning in January but within a few hours a national lockdown was announced and we then spent time preparing to provide both face to face teaching to children of critical workers and remote education at the same time.

We have four bubbles open to critical workers and all teachers and teaching assistants are in school working with children. The staff have been amazing at delivering live lessons, recorded lessons and online learning across the curriculum. We have had live celebration assemblies, recorded singing assemblies and collective worship recordings. There have been music lessons online and even ukulele sessions via online learning. The teachers have been creative in their approach and mindful of the challenges families face by educating at home whilst also have other commitments such as working from home.

The commitment from everybody has been nothing short of marvellous. The families working at home with their children, the critical workers and their children and of course the staff and governors who have supported the school.

I would also like to thank the PTFA and the community for their amazing efforts. In particular thanks should

go to David Taylor, a local resident with no children at the school, whose kind donation has enabled us to purchase 5 more laptops. In addition to this, a governor has offered to pay for a new laptop trolley and a parent has funded six iPads for the school. These incredibly generous donations have meant we have a great stock of digital devices to be used across the school and I am speechless as to the generosity of the local community. I cannot thank these people enough.

One of the big pushes I would like to make is to improve our outdoor areas this year. We will be applying for various grants but if you think you know of any grants worth applying for or funds that might be available, they would be welcome. The school looks great inside and our technology offer is much improved and I think it is time to improve the outside spaces. It would be great to have some things in place for the summer or the autumn when hopefully the most children can benefit.

I hope to continue to update you on how the school is getting on and I am sure there will be changes ahead. Whilst I and the rest of the staff are looking forward to having everyone in school, including our nursery children, we know the importance of the current situation and how important it is to follow the guidance of STAY HOME – PROTECT THE NHS – SAVE LIVES. Our health colleagues are doing wonderful things and we look forward to when it is safe to welcome back all our families to the school. In the meantime, stay safe and well.

Richard Brown



Spring Update - 2021

Wet, cold and the never-ending lockdown do not encourage outdoor activities, but the Wilbrahams Environment Group has not been in hibernation over the last few months. Besides the usual Zoom meetings we have been actively planning for the time when we are allowed out on “day release” so here is a summary of the current activity and plans.

If you would like to join WEG then use the link below to sign up and remember, we have only one aim and that is making the villages a nicer place to live for now and the future generations. As of 13th February 2021 we have 59 registered members so come join us and help make your surroundings an even nicer place to live.

<http://bit.ly/wilbrahamseg>

Wilbraham Farms

In December representatives from WEG and from the Great Wilbraham Parish Council enjoyed a tour of the farm with Chris Ascroft, Malek Hyde-Smith and their professional advisors. We were really impressed by the conservation measures already in place and see some potential productive collaborations in the future. As the villages are surrounded by agricultural land it's great to get to understand what are the challenges faced by our dedicated farmers. Chris gave a really interesting talk on the Wilbraham Farms in the “Know your Neighbour“ series so if you would like to catch up, see the YouTube channel <http://bit.ly/kyntalks>

Village Planting

In Little Wilbraham the volunteer team is preparing to plant up the ‘other’ road junction triangle in a similar manner to the first and this project will include a tree and low-level planting. If you have noticed the pile of mulch at the entrance to the village that's the start. There is more work in hand for “The Pits “area including the building of a new path, some tree work and the beginning of the management plan for the proposed wildflower area. For both villages the Wellbrahams' Group has lots of donated plants in hand and has approached the Great Wilbraham Parish Council seeking approval for highway planting. On the Rec. at Great Wilbraham planting plans have been developed for the prominent area around the Noticeboard and also for the area around the Gienke's house. Look out for some activity in those areas when things are a little more relaxed.

Wilbraham River Protection Society - WRPS

One of our members has joined the WRPS committee and is keen to get our local fen lands added to the National Trust Wicken Fen 100 Year Vision. We are also exploring how the two groups can work collaboratively on joint projects so if you would like to contribute or have any ideas relating to our ephemeral river please let us know. This winter has been a fantastic year for the amount of water flowing in the river and gives a hint at what it must have been like when boats navigated their way upstream.

Maybe a historical overview of the river would be a good talk for the next series of “Know Your Neighbour”

Litter Picks

The annual litter pick for the villages is still a possibility so look out for more information over the next month or so before the vegetation hides the rubbish. If you are out on a walk then slip a bag into your pocket before you go and pick up the odd can or two. Every little bit helps.

Triangles Opposite the School

Work is progressing towards enhancing the triangles just across the road from the primary school and the application to fell two damaged trees, has been advertised and that work should be completed in late Feb/early March. Potential upgrades to the parking arrangements are currently in discussion with the Parish Council and the County Council and a final proposal is planned for the Great Wilbraham Parish Council Annual General Meeting which is scheduled for May. And finally.....



Bulb Bombing

This is a new initiative designed to add some cheery colour to the villages come the spring of 2022. WEG is proposing some intensive bulb planting sessions in the autumn. This initiative is an extension of the bulb planting sessions that have already been completed by the Wellbrahams with some help from WEG volunteers. Look out for some of the Wellbrahams handy work coming into flower over the next few weeks.

Here is the twist - later this year WEG will be calling for donations of bulbs or cash that will enable the volunteer group to really add to the spring flowering collection around the villages. What we are proposing is we build up a large

collection of bulbs and around October of this year, our volunteers will “Bulb Bomb” approved sites so the spring of 2022 will be the start of some hopefully, spectacular displays as the years pass. If you have a suggested space that could potentially be “bombed” please let us know.

If you would like any more information about WEG use any of the following.

Tony Goryn: 01223 880 093, Email: wilbrahamseg@gmail.com, Web: www.wilbrahams.co.uk/information/weg/

WEG

Untold Stories 23 : Graham and Hilary Burton

For this issue I met Hilary and Graham Burton on Zoom. Since Hilary is known to many through organising the volunteers to help isolating residents, and through hosting virtual coffee mornings, I asked her first about her early life.

I was born near Durham, the second of three children. We had a very adventurous childhood: we used to go out on our bikes and walking. We had great freedom. Durham is such a beautiful city - I never got used to how beautiful it was. We would wander in and out of the cathedral.

My father was a mining engineer, my mother a part-time primary school teacher. When the mines were closing, although we were very much a north-east family, we followed the mining down to Derbyshire. I went to a girl’s grammar school in Chesterfield. That was a beautiful place too, and we enjoyed the Derbyshire countryside. I did a lot of music then- I learned the violin at school - but was drawn to the sciences. I went on to St Hugh’s College at Oxford to read medicine – it was the first year that the girls’ school had got anyone into Oxford or Cambridge. I was bowled over by the beauty of Oxford.

Did you keep up your music?

I loved chamber music and played in a group during my student days but once I started hospital work, I could not keep up the practice. The violin is a difficult instrument to return to once you have dropped it, but later in life I took up the piano and started singing with some of the local groups.

You graduated in medicine and went on to a medical career?

I stayed at Oxford and did my clinical training at the Radcliffe Infirmary. That’s where I met Graham. We were medical students together.

Let’s go across to Graham then. Would you like to say something about your early life?

I am more of a local. I was born in Queen Edith’s Way, and many of my father’s family are buried in Mill Road cemetery. My early life was in St. Albans and my education was in Colchester. My father set up a new Secondary Modern School there, which later became a Comprehensive.



So you were quite a scholastic family.

Things changed after the second world war. Returning servicemen were able to take degree courses at Cambridge, and my father took that opportunity. He was the first member of the family to see the inside of the university, having lived in the university town. That opened his eyes to academic achievement.

At what stage did you become interested in medicine?

In the sixth form I was interested in human biology, and medicine seemed the most suitable course for that.

Were you more interested in the clinical or the research side?

We all had to do pre-clinical training, but at that time there was no clinical school in Cambridge. I went to Oxford for that. I was attracted to research and spent the rest of my career back in the university here.

You were the Professor of the Physiology of Reproduction.

Yes. I have always been fascinated by the ability of the baby to survive inside the mother’s uterus, and the interaction of the two through the placenta. Then, in applying that research to some of the problems that can occur in pregnancy.

A complicated organ, essential to all of us at the beginning of our lives.

Yes. There is a lot of sociology around it too. The ancient Egyptians believed that we have two souls and the external one resided in the placenta, so they mummified it. Many middle eastern cultures still bury it so that you can be reunited with it at the time of death.

Do you have any advice to offer about smoking and drinking during pregnancy?

Both are harmful, right from the first few weeks and months of pregnancy, so stop both before pregnancy.



Let's come back to Hilary. Your speciality has been in public health.

Yes, I started in General Practice and was a trainee at the Bottisham Practice, but what interested me more was Public Health: how you can predict and prevent disease, and how you can organise health systems to improve the health of the whole population. I went on to specialist training and became a consultant in Public Health in Cambridge with responsibility for children's health. Two main groups of children caused the most health concern: a large group living with the terrible effects of poverty and poor parenting; and a smaller but very important group of children born with severe disabilities – here I made connection with my next career move because many of these children were affected by genetic conditions. In 1997, I was involved in the founding of a new organisation that focused on genetics – at the time an emerging and rather 'niche' area.



So what is the connection between genetics and public health? We are used to talking about genetically modified tomatoes – are we talking about genetically modified human beings?

Our work was about understanding genetic variation and its effect on health and disease. When we started the human genome was only just being sequenced (a lot of the work was done at the Sanger Centre in Cambridge) – very slowly and at great expense. Things have progressed rapidly since then – not just human genomes, but more recently the corona virus sequences that have helped scientists understand the spread of the pandemic.

That is Public Health Genomics, which you founded?

Yes. It was an independent organisation which operated as a charity. It is now a part of the university. We worked at a national level to help develop genetics policy. We needed to involve people from many backgrounds - basic science, clinical medicine, law, social science and ethics as well as the public. Exciting challenges included working with the medical Royal Colleges to help develop genetics expertise beyond specialist centres such as Addenbrooke's; and developing proposals with the National Screening Committee to expand the newborn 'heel-prick' screening test.

Are you still involved?

I have recently retired, although I've had some work to finish off and I still keep in touch with my colleagues.

You have organised volunteers to visit isolated people in the villages, and you host virtual coffee mornings. Do you see that as a part of public health and wellbeing?

Yes – this has been as part of our Covid support response. As in Public Health, we have tried to understand and identify people's needs, work as a team to provide support and maintain links with the local authority. I think what volunteers have done right across the country has been fantastic.

Can we come now to your shared life: have you had a family?

Graham: we started married life in Great Wilbraham: we bought a house in Station Road in 1978.

Hilary: we had five children. One of our lovely memories of Station Road was when Clare, our first child, was born, we did not know many people, but 27 cards came through the door. Our children went to the old village primary school and then to Bottisham Village College. We outgrew that house and moved to Little Wilbraham, where we converted Primrose Farm Barn, (next to The Hole in the Wall) from a derelict barn. In 2017 we moved back to Great Wilbraham and are now living in Frog End.

Grandchildren?

We have three and have been doing some home-schooling to help out during the school closure.

Is there anything either of you would like to say?

Graham and Hilary: we feel we have been part of a wonderful community; people really care about each other and that has been shown very clearly during the Covid crisis.

Thank you both very much.

John Tanburn

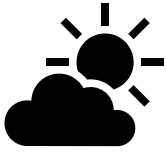


Christmas Tree Recycling Scheme In aid of Arthur Rank Hospice Charity

Many thanks to all those people in the Wilbrahams and Six Mile Bottom who took part in the scheme. The son-in-law and I collected the trees and would like to thank Robert and Trevor Hogger for allowing us to use their tipper truck. Arthur rank informed me that overall they had collected 2900 trees and donations of approximately £54,000. Simply amazing and thank you again for your donation to a very worthy charity.

Peter Ludman





Positive Thinking during Lockdown

During the winter, we see less sunlight than at any other time of the year and, with the return of Lockdown, many of us may have felt the effects of the dark cold days to even greater extent than during previous years. The restrictions with which we have been living curtailed many of the activities we would use to lift our spirits, so it seems timely to revisit the fifth Pillar of Health: **Positive Thinking** in this issue.

More than ever, we feel unable to change much of the world around us, but we can do our best to change the way we think about it. And, if we can develop a positive attitude, we may experience an inner sense of peace, self-worth, and happiness. Letting others touch us deeply through their kindness however remotely or 'virtually' is also important to our wellbeing. We can cultivate positive attitudes and emotions by engaging in valuable relationships even at a distance and acknowledging the accomplishments of ourselves and others.

The following seven keys can help unlock our happiness in challenging and manage our responses to what happens not only around us but also within us:

The way you spend the first 10 minutes of your day can dictate the rest of it, so do your best to start it with a positive attitude.

Avoid staying in bed longer than you really need to especially if your mood is low upon waking. Get up, look outside and, if possible, take a walk. Your worries, anxieties and concerns will feel smaller and less overwhelming by the time you return home. Remember that what other people think of you is up to them. The most important opinion for your mental wellbeing is how you think of yourself, so regard yourself with kindness and compassion.

You can gain greater self-esteem by doing estimable things which don't have to change the world but may enhance it for someone just by simply showing kindness to them with a telephone call, a message or just a smile.

If you're finding things particularly difficult, don't waste your mental energy thinking about the future. Just do your best in the present and move forward one moment at a time.

And don't forget that we may be in Lockdown, we're still allowed to have some fun, laugh and be silly, as long as we stay within the rules.

Taking care of ourselves as well as others feeds our sense of self-worth and self-esteem. Simply eating well, moving regularly, and taking time to rest will build and maintain both our physical and emotional health promoting a positive attitude.

Try using the above keys together with all the Five Pillars of Health (adequate breathing, a balanced diet, moderate exercise, restful sleep, and positive thinking) to unlock your own happiness and share that with everyone around you. Now that Spring is in the air, embrace it with all your senses and enjoy!

Juliette Baysham



Speed Awareness Update

On 8th February the Speed Awareness Team presented the Parish Council's application to Cambridge County Council for Local Highways Initiative funding for a traffic calming project between the school and nursery. This initial project is the 1st phase of a traffic calming scheme which, we hope in time, will extend throughout the village.

About 50 villages have also applied for funding from the Local Highways Initiative so there is serious competition for monies from a limited pot.

Assuming that we are successful, and we will not know until June 2021, Highways will carry out a final survey and provide full details of the proposed traffic calming project for Church Street and The Lanes. This will include signage for the 20mph advisory limit and speed cushions. Highways will take account of street lighting, side roads, blind corners, property access etc. to determine where they recommend the cushions should be placed.

Once we know the proposed precise locations of the speed cushions, we will be able to communicate with local residents. The 20mph advisory zone signage is only part of the traffic calming package and to be most effective it has to be complemented by the speed cushions. Just for information, lorries have a wide track, so their wheels can pass either side of the speed cushions to reduce noise and disturbance.

The PC plan has always been to get Phase 1 approved, then consider additional speed reduction measures in other parts of the village. This phased approach is necessary because speed reduction is an expensive process, and each PC is limited to a single LHI funding application per annum.

Hopefully we will be successful with our Phase 1 application, but in anticipation of getting approval we now need to think about Phase 2. The Speed Awareness Team would welcome any suggestions via the Parish Clerk:

ClerkGW@Wilbrahams.co.uk

Please note that the Speed Awareness Device cannot differentiate between vehicle types. Every time a vehicle approaches the SAD it records the speed and clicks up one on the vehicle count, regardless of the vehicle type. Therefore, we do not have the ability to record any data that is specific to HGVs. The Speed Awareness Team.

Heavy Goods Vehicles and the Village

Forty years ago, an elderly resident in the village said to me "We must do something about these lorries." In all the time since, we have not been able to do very much, and meanwhile, the lorries have become more numerous, heavier and longer. They have now been joined by long car transporters.



To some extent this is a problem that we have all learned to live with, although that is not so easy when several HGVs are turning by your house at 5.30 in the morning. Several of us are saying again, "We must do something about these lorries." And then we ask the question, "What can we do?" Sadly, as we and other neighbouring villages have discovered, the short answer in many instances is 'Not a lot.' The problem

is dense with legislation and bureaucracy, and there is a shortage of money. However, that doesn't mean that we shouldn't try to make our village a more pleasant and safer place to live. Apart from anything else, we owe it to the children.

The situation will be discussed at the March meeting of the Parish Council, and a few of us are proposing to the Council that it should set up a Traffic Working Group as has been done in many other villages. The Group would work with and under the auspices of the Council to collect evidence of the traffic passing through the village, our safety, the noise, the pollution, speeding, vibration, the damage to verges and other associated problems. Verges? Yes, just check the area by the High Street post box. The existing problems are bad enough, but we have just learned that there are proposals for even larger lorries to be permitted on our country roads.



If the Parish Council agrees, a Traffic Working Group, reporting to the Parish Council, will look for ways of reducing as many of these traffic problems as possible. If solutions are not permitted by law, then the Group will try to seek voluntary arrangements with the local owners of the HGV destinations, most of which are in Fulbourn, and their suppliers. The Group will need evidence, particularly of HGVs acting dangerously or with difficulty, and a few interested people are already making notes and taking photos. If you would like to help now or in the future, or even if you think we are wasting our time, we have set up a temporary e-mail address while we wait to see if we should create a more official destination for your information. Please send your comments, information and photos to hgvs.wilbraham@gmail.com



David Richer

Annual Photography Competition

Each year there is a photography competition as part of the Wilbrahams Flower, Vegetable and Produce Show held in July. Entrants are given five subjects on which to submit photographs as digital files (jpegs). Each entrant may enter one or two images in each class.

The images are then judged by an external judge who doesn't live in the village so should not be biased! He also comes back in September to comment on all of the images and to say why he liked some more than others and, in delivering his comments, gives some useful hints on how to improve your photography. Usually this meeting is held in the Memorial Hall, but last year it was conducted by Zoom.

The subjects for this year are:

1. A Flower – remember, a flower, not a plant! The photo should be all about a single bloom
2. Spots. Not acne, I hope! It might be a polka dot fabric garment or something in nature
3. Running water - a stream? A bath tap? A garden water feature?
4. A portrait - this could be a child, a pet or granny - Not a selfie please!
5. Mechanical - anything mechanical from something tiny like a clockwork watch to a combine harvester

I have been asked why not a selfie? The reason is to maintain as much anonymity as we can.

You do not have to have an expensive camera to take part – several of last year's top scorers were taken with phones!

So please put on your thinking caps and get out there to take some stunning photos.

If you have any questions, please contact me

Chris Fell. 01223 882456

Over the farm gate

I want to sum up the last 3 months very simply WET. That is all. More seriously;

This time of the year is traditionally reserved for hedging, ditching and workshop repairs, but with no ditches, a contractor to cut 1/3rd of our rotationally cut hedges and the machinery still working it seems that 'meetings' seem to have taken priority. Pre pandemic there always were meetings of various kinds, either informative, instructional or even business committee meetings, but there seem to be more 'Zoom' meetings now than there ever were face to face meetings before. I spoke to someone who had spent the whole day staring at a screen looking at people's bookshelves and was going home to have another session. That is too much for me, although I would recommend the Wilbraham village 'Know Your Neighbour' talks from local people explaining their hobby or day job. I did one around the farm and I found it very beneficial to have to think about what and why we do certain things and explain some long-term strategies as well as answer some searching questions at the end. I have also hosted a socially distanced outdoor visit of some members of the Parish council and WEG (Wilbrahams environmental group) to explain some of the unseen work being done and planned on the farm for protecting the environment. Under the new

Agriculture act, 'setaside' will disappear and be replaced with more environmentally suitable actions, largely based around carbon capture and when the new rules are available we will be studying them closely to see what will fit here. In the meantime, I have tidied the area next to the school and planted a hedge alongside it and planted a new hedge next to the road leading to the waters.

On the farm and not on a computer screen, the sheep finished grazing the cover crops and they are now ploughed up ready to establish barley and peas. The sugarbeet is now all lifted and in the factory. Yields were better than expected despite a dry spring and an influx of virus contaminated aphids who hadn't heard of self-isolating. The ground conditions for harvesting this crop this year have been very poor and there has been some considerable infrastructure damage to correct in the drier weather, the cost of which should rightly be attributed to the gross margin of the crop, but would make it borderline in profitability if it was. The light covering of snow seems to have mineralised a bit of nitrogen under the winter crops and coupled with the frost killing off a few diseased leaves the plants appear to have greened up a bit which is pleasing.

Back to the office in the frost for more Zoom meetings now.

Chris Ascroft, Wilbraham farms

The St Nicholas Great Wilbraham Trust

Since my last quarterly report in October, we are now all in the third Covid lockdown, and this continues to hold back any further social fund-raising events, which remain cancelled until further notice.

As at 31 January 2021, the Trust's Capital Legacy Fund was holding stocks & shares & cash to the value of slightly over £185,000 (at the end of October it was standing at just over £150,000), so the capital fund benefited from the Santa Rally at the end of last year, rising by 23% compared to the FTSE All Share Index that went up by 15% over the same period. We continue to carefully review how best to safely maximise the income/dividends received from the "protected" capital, during these uncertain times and into the future. The rolling annual income over the past 12 months amounted to £6,613 pa, significantly up (23%) on the previous 12 months of £5,362 pa, resulting from some further diversification of the portfolio.

Meanwhile, we continue to be very thankful to those who are making regular contributions to the Trust via banker's standing orders, which currently produces a regular income in excess of £1,800 pa (including the Gift Aid Tax Refund, if you are a taxpayer) ... all of which goes to maintaining (and sometimes improving upon) the fabric of St Nicholas church. The cash balance in the current account as at 31 January was £19,563, of which £15,000 has been earmarked for a new all electric space heating system to our church (total cost now estimated at £35,000, considerably less than the estimated £50,000 previously, when we had not yet received the good news from UK Power Networks that there is no need to upgrade the electricity supply). The revised specification & estimate is now awaiting final approval from the Diocese. The funding target remains at £35,000 for the new all electric space heating system, of which £31,000 has now been secured, comprising: The Trust £15,000, the PCC £16,000 which includes a private donation from a village family. There remains a shortfall of just £4,000 to complete the funds required (the remainder of the Trust's cash balance is being put towards general repairs & maintenance as listed under the church architect's 2020 Quinquennial Report) ... so any further donations, however small or large (preferably through Gift Aid), will be most gratefully received.

For further information on how to make donations and how to contribute most efficiently to the Trust's Capital Legacy Fund, please contact our treasurer, Tony Ryan, who may be contacted via email: lyansan@btinternet.com.

With my best wishes,

Graham Clarke, chairman ... written on 6 February 2021

Know Your Neighbour

A new initiative for 2020/21 has been the series “Know Your Neighbour” hosted by the Wilbrahams and Six Mile Bottom COVID Support Group and supported by the Little Wilbraham and Six Mile Bottom Parish Council.

If you ever wondered what your neighbour did in their past life or thinks about to fill in these long hours now, then this is the series for you. Local members of our villages talk about topics that vary from brains to baking and from farming to quilting.

We are just coming to the end of Series II after a very successful Series I with 40 - 50 residents viewing these live Zoom talks each week.

The talks so far, which are at 8PM on a Tuesday evening, are:

Series I - 2020/17th November David Humphrey - Artificial Intelligence

24th November Claire Daunton - Medieval Stained Glass of Norfolk

1st December Chris Ascroft - Wilbraham Farms

Series II - 2021

26th January David Lomas - Inner Vision: A brief history of how doctors see inside the human body

2nd February Emma Adams - Practicing Architecture at different scales

9th February Kathy Stringer - A Lockdown Quilt Project

16th February Ian Cumming - From Tibet to The Tent: my Bake Off journey

23rd February Nigel Start - The Story of Cereal Improvement in Britain

2nd March Martin Daunton - Contested Heritage

We now have a YouTube Channel where all the talks are posted so if you missed one or would like to see one again they will all be posted on the channel. Subscribe and you will be notified when the new talk is posted.

Our Channel: <https://www.youtube.com/channel/UCNjHipljp5JTOOLmd0wwJuw>

Web Page: <https://www.wilbrahams.co.uk/know-your-neighbour/>

If you missed the first two series, then look out for another session when the nights start to close in November 2021.

Any questions or you have a suggestion for potential speakers send an email to [Andrew Carter](mailto:Andrew.Carter@wilbrahams.co.uk) or [Hilary Burton](mailto:Hilary.Burton@wilbrahams.co.uk).

Down to Earth on the Farm



Greener Poo and CO²

We need greener poo and better poo management.

Whilst many who walk their dogs down Hawk Mill Farm drive footpath clear up their dog poo, ***thank you***, many others seem to regard it as a convenient dog toilet with 57 poos being cleared up on one occasion.

So how can this poo be greener I hear you ask. Whilst clearing up behind your dog in the villages and on the playing fields is the right thing to do has anyone given any thought to what happens to that mix of dog deposit and man-made plastics after it is emptied from the bin! Landfill I suspect, not green at all. Plastic free recycling is a greener option, so I'd be pleased if dog walkers flick deposits into the fields or hedgerow leaving the grass verges clean for walkers and the mower man.

Whilst on the subject of plastic, I'm becoming very fed up of having to pick up plastic drinks bottles that have been abandoned beside the cross farm footpaths, where and when is this type of litter dropping ever acceptable?

Farm news

The recent cold snap has given us a break from the incessant rain with 5mm events being measured far too frequently. The water table is now very high which will have helped to recharge the deep aquifers which we rely on for our domestic water supplies, but the larger puddles on low lying areas of growing crops is less welcome.

Another plus from the cold spell is that it will have helped to control overwintering pests and diseases. This will reduce the need for any early spring fungicide sprays and hopefully have controlled the aphid population that spread the viruses which devastated sugar beet yields for many this past year.

With the lack of field operations due to poor weather and soil conditions I have been busy in the workshop modifying a 1960s seed dresser which will be used for cleaning out weed seeds from my farm saved “cash” crop seed and the small batches of cover crop seed I produce. Small batches are prohibitively expensive to have cleaned commercially.

The over wintered cover crops on fields that will shortly be drilled with spring barley have mostly been sprayed off (desiccated) and although looking dead still host an enormous number of small birds that are feeding on the seeds that were set. The Linnet flock is very impressive. These areas are also home to larger birds with snipe being commonly seen as are Woodcock. The snipe feed on our ever-increasing worm population.

Another task that we'll get on with now the ground is thawing is hedge planting. We will be completing the second half of a 420 metre Woodland Trust grant funded scheme and planting an additional 500 metres elsewhere on the farm, that's 3500 plants to go in which will all have support sticks and hare guards!

These hedgerows will add to the farm's natural capital and contribute to the carbon sequestration (positive) section of the farm carbon footprint that I'm currently recording. This is being done on the Farm Carbon Toolkit calculator, one of many available, and will hopefully show that as a business we are not only carbon neutral but carbon positive. This may leave us with a marketable CO² tonnage for other businesses to buy to offset part of their own footprints should they not be able to achieve neutrality through their own reduction measures. Agriculture is in a wonderful position to make a really positive contribution to climate change through carbon sequestration, locking CO² away in the soil as soil organic carbon (organic matter).

My Regenerative Agriculture farming system which employs growing crops year-round on every field is especially good at this as every field is like a mini Rain Forest.

And finally, Look out for the launch of a film on Feb 26th by Carbon Neutral Cambridge "Sustainable Farming in Cambridgeshire" available to view via their website I believe and features some of the things we are doing on the farm.

David White

The Wilbrahams' & Six Mile Bottom Vegetable, Flower and Produce Show 2021

SAVE THE DATE: Saturday 17th July 2 pm, Great Wilbraham Recreation Ground



With subzero temperatures outside and snow on the ground it is hard to imagine the warm sunny days of summer! However, we are thinking ahead to the Annual Show and hoping you are focusing on your gardens, planning your crops and busy with craft-making, baking and preserving!

As it is unclear how the lay of the land will be regarding Covid restrictions by mid-July and whether the Memorial Hall will be in use, we are planning to run the Show on similar lines to last year's Doorstep Show but to hold it on the Rec...weather permitting! The idea being that you would set up your display on a table on the Rec rather than on your Doorstep. Having the tables all in one place would enable everyone to get together, look around all the displays more easily and continue the tradition of this fun and social event for the Villages....and give us all something to look forward to!! (There will be a limited number of Hall tables available for use and help will be on hand for anyone needing their items transported from home to the Rec and back.)

We hope to be able to serve the traditional 'Tea/coffee and cakes' outdoors but this will depend, of course on Government guidelines at the time.

Full details of the Show and Classes will be printed in the Summer edition of the Warbler (early June) and a flyer delivered to your door. The categories are likely to remain the same:



- Home - grown Fruit and Veg
- Garden flowers/house plants
- Flower arrangements
- Produce/preserves/baking
- Craft items
- Photography (***)please see Chris Fell's article)
- Children's craft/projects

As the SPUD IN THE BUCKET COMPETITION seemed to be so popular last year, we are running it again – I have the seed potatoes already and a supply of buckets (99p each) should you need one.



There even maybe a new Cup to win! PLEASE get in touch with me, Rosie White, if you wish to take part – contact details below.

This year, the PLUG PLANT COMPETITION will be to nurture a Fuchsia. I am hoping to have the plug plants by early April and will put a notice on the Wilbrahams' website and in the Shop window when they are available. (The David Waters Memorial Cup will be awarded to the winner.)

Entries for both competitions are limited to 1 per person.

If you have any thoughts/ideas about the Show, please let me know ASAP.

Looking forward to seeing you in July with the 'fruits of your labours'. Meanwhile keep safe and well...and warm!

Rosie White, Email : rosiewhite77@hotmail.com : Tel 01223 881293 Mobile 07757982934



Wilbrahams' Choir

Due to COVID19 restrictions the Wilbraham's Community Choir is still temporarily suspended. However, the choir remains active and members still enjoyed some 2020 Christmas festivities, which included an online Christmas quiz and a small amount of socially distanced carol singing outside.

Thanks to Wadlow Wind Farm for a generous donation to the choir, used to buy a portable keyboard which can be easily transported around different venues. This has already been used to accompany the choir for a service in Little Wilbraham Church and it will be

extremely useful when we can begin live performances again.

The choir raised funds at our last summer concert to support Great and Little Wilbraham Recreation grounds. Community Choir leader, Gillian, tried out the new bench donated to the play area in Little Wilbraham by the choir members.

For the time being we plan to continue online Zoom choir meetings on Thursday evenings during school term time and hope to get back to normal choir practice in the Memorial Hall, Great Wilbraham, as soon as the restrictions are lifted.

Singing has very positive benefits to mental health and can be enjoyed by everyone of all ages, experience and ability. If reading this, you or anyone else are thinking you would be interested in attending our online choir sessions and enjoy some singing in the privacy of your own home, then please get in touch! If you are not certain about the technology side of things then we can offer help. The invitation is open to anyone and extends to those outside the Wilbrahams.

My contact details are:

Vanessa at vanessajnichols@gmail.com or 07876363707

Stay Safe and Keep Singing



A View from the garden

This Winter has been particularly unforgiving, and it seems that the national lock-down has extended its tentacles to affect our garden activities. To complete the effect, my small flock of chickens have been confined since mid-December due to an outbreak of bird-flu in the UK. The ground is now absolutely saturated. After an extremely wet December I recorded 88mm in January and the unsettled spell continued into February, interrupted by a very cold snowy spell. But we live in hope and expectation. As I write the ground is still hard frozen, but this will change quickly when the air mass moves in from the Atlantic. I've not been able to make any sowings of winter onions or beans, so I will be poised to get the ground ready when the time comes. I particularly like the flavour of fresh broad beans in Spring (not something readily available from the supermarkets) and as large-seeded types they will be able to germinate more easily in colder/wetter conditions. Last year brought us a warm dry Spring which caused germination difficulties for some vegetable seeds. Parsnips are notoriously difficult and it always pays to have fresh seed. To save your own seed, just leave a

couple of roots in the ground to produce flowering heads. They ripen quickly in July, and I normally pick a dry day to shake the heads into an old washing-up bowl. Leave in the greenhouse or conservatory for a few days to finish drying (and allowing the accompanying insects to disperse!) before rubbing through your fingers and giving a gentle blow to get rid of the stalks. Store the seed in a clean glass jar. This gives you next seasons seed, but it won't last more than a year before germination falls away quickly, so repeat the process. Whilst on the subject, I also keep my own broad bean and pea seeds from year to year, but it doesn't work if you have started with F1 varieties. Runner and dwarf beans are Phaseolus types which are more prone to cross-pollinate, so beware. The other item on my 'watch-list' is leek moth. This relatively recent arrival has now become a persistent pest for amateur growers, and I've yet to find a reliable solution but I'm still working on it. I will keep you updated in the next issue.

Nigel Start



Writing in the middle of this extended 'Lockdown 3', we have no definite news to give on when the Memorial Hall will be allowed to open again. We have not taken regular bookings or planned any events for 2021 but are in a position to do so as soon as we are told it will be permitted / safe. We hope that with the rapid vaccine roll-out that, if not by the early summer, we may at least be meeting again in the hall by the end of the summer. It will be wonderful to eventually reinstate the varied and vibrant social hub that the hall and social club provided. 'Zoom' has been a great technical alternative, but it is not available to all and is just not the same as gathering in person.

As last year, some events may be re-configured to take place in the open air, rather than inside. We have set a provisional date for the next Farmers' Market of **SATURDAY APRIL 10TH** if restrictions have been lifted by then. Let's hope the sun shines for us (we have had some rain-drenched markets over the autumn). We really appreciate the support the village shows for the markets. Many of you come, (rain or shine), and we are getting a reputation locally. We have a range of local produce stalls that sell handmade pies, British cheeses, artisan breads, Greek deli, cheesecakes, game / meat, coffee, beer, cider and eco products. We also run a 'Made in the Wilbrahams' stall with local bakes and produce, which raises funds for the Memorial Hall. The hall has been without an income for nearly a year now, so all monies raised make a much-needed contribution to the continued costs of maintaining and insuring the (empty) building. If you could contribute to the Wilbrahams' stall, that would also be much appreciated! Please see the Wilbraham's website and the hall and community Facebook pages to keep up to date with this.

It is some comfort that we can see the Play Area is being really well used, despite the wet weather and the bitterly cold snap at the moment. We have one final installation to complete – the mound / tunnel. We need a short run of dry weather in mid spring to finish the landscaping for this. It is being completed with volunteer labour. If you are able to help with landscaping, that would be really appreciated. Please email Paul Lambton, who is coordinating this: paul.lambton@googlemail.com.



With the new equipment installed, we would like to make sure it is kept in good order / remains safe and popular for the years to come. We are establishing a 'Play Area User Group' to act as a link between regular users and the Memorial Hall Committee, so there is an easy point of contact. Emily Oliver has kindly offered to set up the group with other interested parents / carers. Her contact details are 07789438393

emilystar_uk@yahoo.com. Please contact her if you would like to get involved, or if you have any thoughts or comments on the Play Area. Below is a summary of our ideas for the group:

“The group will act as the ‘eyes and ears’ for the Memorial Hall Committee in respect of the use of the Play Area, notwithstanding that the Committee retain the legal responsibility for the facility. The group will act as the first point of contact for users and parents of the play area: for maintenance or safety issues as well as for ideas for improvement / management / events. This will feed into the Hall Committee’s inspection and maintenance process covering the play area. It is hoped that the Group will, through its own network of users, be able to organise activities which assist in keeping the environment safe, clean and tidy. They might also promote fundraising or events focused on the play area.

The Group

It will be self-managing and self-controlled.

A lead member will be nominated who will act as coordinator

It will be made up of interested parents and frequent users of the play area

Group size will be set by the group

Trustees will meet with the group as requested and will feed back comments to the monthly Hall Committee meetings.

Anticipated Group activities

Providing a watchful eye on use of equipment and occurrence of damage. As necessary inform the Hall Committee of damage and misuse

Promoting safe use of the play area and a litter free environment

Reporting to the Hall Committee potential safety concerns

Raising with the Hall Committee aspects for improvement in the play area for consideration by the committee

Organising litter picks as necessary and other activities which will support maintaining a good environment

Get involved with fundraising for future improvements to the Play Area”

The Memorial Hall Committee continue to meet monthly via 'Zoom' to discuss and plan the Hall & Recreation Ground business. If anyone has any suggestions or comments regarding the Memorial Hall, please contact me on 881609 mail@emma-adams.co.uk Shirley Morley (Secretary) contact details: booking.wilbrahamsmemorialhall@gmail.com

Emma Adams, Chair of the Memorial Hall Committee



The Bird, the Bough and the Ivied Tree

It is cold in the North this morning,
there is little to satisfy me,
'cept the sight of a small bird flying
'twixt bare bough and ivied tree
with its sense of what is nature
and how it is to be free
from the hope or despair that is future,
to the love and life it might be.

A Will-o'-the-wisp sets me dreaming
of better times to unfold;
how the coal that he carries protects us;
will free us from our parole.
Jack-o'-lantern's hell-fire embers
entice me further to dream
that fate will speak to our future;
that we will be redeemed.

A cyclamen's pinks and purples
attract me, affix my eye,
as fragile as a memory,
a metaphor for why,
and who and how and wherefore,
a quest too great for me,
so I sit and stare in rapture
at the bird, the bough, the ivy.

Tony Goryn

Fr Miles Pateman

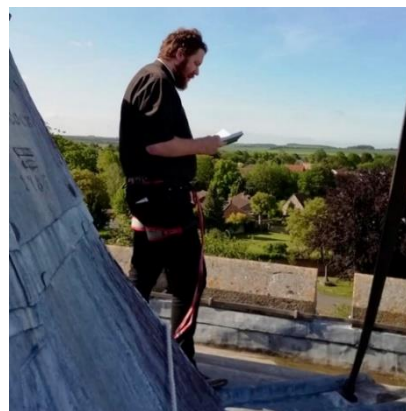
It is difficult to try and sum up just over two years of ministry in something short enough for a parish magazine! But here we go.

By the time you get this, I will have had my last Sunday as assistant Curate of Fulbourn, Great Wilbraham, and Little Wilbraham with Six Mile Bottom. I am now heading to be a Vicar in the ministry team of the Rectorial Benefice of Aberavon in the Diocese of Llandaff.

It was Shrove Tuesday of 2019 that I was first "introduced" to the Benefice, at the Pancake Party at St Nicholas'. Certainly a good way to start anything is with lots of food. Since then it feels like I've been with you forever and no time at all. The round of Sunday services, Lent Groups, Wednesday Churches, Baby Dragons, Mother and Baby Groups (I can even confidently hold a baby as long as I'm supervised!) has become such a huge part of my life that it seems strange even to think that it'll not include me anymore.

Perhaps it's best to share a few highlights:

Singing from the tower for Ascension Day (and other days beside) – especially waking up the then barman at the Six Bells with it! I've heard so many complimentary things about the few times I've been able to sing for the village like that. Let's hope someone takes up the challenge and keeps singing! Particular thanks must go to Andrew Tristram for making sure I was safe up there... and not pushing me off!



Midnight Masses at St John's in Little Wilbraham and at St Vigor's in Fulbourn. It is one of those services in the year where the gap between Heaven and Earth seems very *thin*. To have been able to share that time with so many of you has been deeply moving.

Wednesday Church in Great Wilbraham. Something I grew into!

Fond memories of being able to be not serious and still worship! Here's hoping that soon St Nicholas' will resound with the voices of the kids from the primary school on a Wednesday afternoon.

And, of course, the funerals, baptisms and weddings. The chance encounters with people in the Co-Op and on the street. Praying and worshipping with and for you all.

Fulbourn and the Wilbrahams will stay in my heart for a very long time. I'm told one never forgets one's curacy parishes. There is so much to remember, and I can never hope to bring them all to mind here.

Please keep me in your prayers as I make the move to Wales. Please pray also for Bishop June, Fr Philip, Fr Ben and the people of Port Talbot among whom I am going to serve. Be assured of my prayers for you.

Fr Miles Pateman

Tree planting – Richard Wright



As we were about to enter the first Covid-19 lockdown a year ago, Richard Wright advised that, at 92, he intended to stand down from his role as Vice-President of the Memorial Hall. During his regular attendance at monthly meetings, he had given much support, encouragement and guidance to the Committee during the two-decade effort to fund the replacement of the old Hall with the new one in 2016. The Trustees decided that we should recognise Richard's contribution to the Committee by planting a tree.

There had been a large tree, on the southern boundary of the Rec within the children's play area, that had to be taken down due to disease and we decided that a new tree could be located nearby.

As reported in the previous edition of the Warbler, Richard died in October 2020 before a tree could be sourced and planted, as we were waiting for the 2020/21 dormant season.

Richard was fond of colourful trees, so an Acer Capperdocicum Rubrus was chosen, which has a Royal Horticultural Society Award of Garden Merit and is suited to our local soil type. It will have red Spring foliage turning to green and then to a yellowish brown in Autumn. A 3m specimen has been sourced and it was planted by Richard's son Alex accompanied by Committee Chairman Emma Adams on 29 December 2020.

Due to Covid restrictions there was no publicity regarding the planting. However, it is intended that, later in the year, an adjacent memorial plaque will be installed when hopefully we will be able to gather in larger numbers.

Allan Painter, Memorial Hall Trustee

The Wilbraham River Protection Society



The Wilbraham River is now in full flow, winding its way through the fen toward Quy and the Cam. Due to Covid restrictions many more people have been walking local footpaths several of which run alongside the river. As you may have discovered these are wonderful walks, often full of surprises such as enjoying the golden evening light across the reedbeds by the SSSI (Site of Special Scientific Interest), watching the deer grazing, or observing the wide variety of birdlife and butterflies in the summer along with the gentle roar of the A14! It is an area of natural beauty and tranquillity and the WRPS are keen to maintain and promote that experience for all. The Fulbourn tributary joins the Little Wilbraham river just beyond Hawk Mill Farm. It arises from springs in the Fulbourn Nature Reserve, which is also an SSSI, and a wonderful place to walk round and enjoy.

This year has been an interesting one for the society. All our meetings have been by Zoom which is a very different experience compared to the companionship of the pub or each other's homes. More importantly there has been a spate of activity from multiple water related organisations and increasing recognition that chalk streams and their surrounding environments are to be actively protected or lost. There is now an All-Party Parliamentary Group on Chalk Streams and a new Chalk Streams Alliance Group.

The society has responded to draft reports from Water Resources East (WRE). Anglian Water setup WRE in 2014 with a range of partners to develop strategies for future water supply that take into account the environment as well as the many other factors influencing resource planning. Greater Cambridge has commissioned a "Chalk Streams Project" that we are responding to and a national Chalk Rivers Action Group has been formed in the last 12 months. Members of the WRPS participated in the recent Chalk Aquifers Alliance meetings and continue to support the Cam Valley Forum.

We have a number of ongoing projects including mapping the historic changes in the course of the river and documenting the current river photographically. We are keen to work with all landowners and organisations that can help us support the river. This coming year we hope to monitor the river flows more closely and engage more with the Environmental Agency who have responsibility for the river.

Whilst the river is now flowing well after all the rain it was almost completely dry in October 2020 and this is detrimental to the wildlife and biodiversity of the river and the Fen around it. All year-round flow is something the WRPS is working to achieve.

With all the recent interest in Chalk Streams and the local environment it is an exciting time. If anyone would like to join us either by becoming a member of the society, helping with projects, or bringing new skills to our committee please contact me and I can further update you on our work.

Rebecca Lomas bex@drcr.info

Red2Green News - www.red2green.org



Red2Green supports adults with learning disabilities and Autism Spectrum Disorder through our Options activities or our Aspirations learning programme. We have two sites, Harvey's Barn in Swaffham Bulbeck and the Community Café and Garden at Lode Road in Bottisham.

During this lockdown Red2Green has continued to support those who need our services the most. Clients and staff are busy making homemade crafts to sell, tending to the plants and playing games throughout the week.

We are also taking walks and when the weather isn't good the learners are making use of the extra space at the two Barns, where they are playing indoor games such as, Boules, Ring Toss, Shotput, Badminton and Tennis using giant rackets and a soft ball/shuttlecock.

For those who do not attend we are running online services, making telephone calls and sending them activity packs.

Community Café and Garden

We are continuing to keep the community café closed, as we need to keep our learners safe. We do though have plenty of plants to sell and put these out on an honesty table during the week.

In addition to the plants we have keyrings, pin cushions, peg bags and many more craft items our learners have made for sale.

Go to www.red2green.org to order online or visit us whilst out for a walk.

Cogs2Computers

Learners are currently working on the Then and Now project. This is looking at what happened in the development of technology in the year, or even month, they were born and creating a project around it and comparing it to what we have now. This is happening in the different bubbles at both Red2Green sites and at home for learners that are unfortunately not with us right now. We look forward to seeing what they come up with.

Red2Green are still working with Swaffham Bulbeck primary school, Arm and The Centre for Computing History in Cambridge in the planning of future activities which involve International Women's day in March, coding and gaming in the following months. We are so excited to have these connections and to deliver this fresh and exciting project.

We are also looking for people to have a 5 minute chat with us about their use of technology throughout the Covid-19 pandemic and share their experiences. Please email info@red2green.org or leave a message with your bubble if you could help us or even spread the word to people who may be interested.

Ways you can support us:

Red2Green provides a vital service for those that we support and their families. The COVID-19 restrictions have made it tougher, and we are so grateful to everyone who supports us, however small.

Buy your plants and gifts from us and tell your friends!

Do your online shopping through AmazonSmile and the giving machine, setting your chosen charity to 'Turning the Red Lights Green'

Donate at www.justgiving.com/red2green

Liz Taylor



Well-brahams Mental Health & Well-being Group

What a strange, difficult and distressing year this has been for so many people – certainly, none of us could have predicted that we would find ourselves in this situation. We therefore hope this latest article for the Warbler finds the residents of our three villages safe and healthy and with a renewed sense of optimism for the future. We look forward to easier times as Spring approaches, and as the rollout of the vaccine hopefully starts to bring the number of Covid cases down.

It's likely that we're still going to have to be extremely careful for much of this year, so a quick update about planned activities and projects may help to give us all a bit of a lift as we look into the next few months.

Our gardening project is ready on the starting blocks, with an assortment of plants and shrubs currently over-wintering in Tony Goryn's garden, ready and waiting for the moment when we have the all-clear from the Parish Council to go ahead and get them into the ground. The first site to be planted will be in Great Wilbraham, adjacent to the new Play area fence by the Parish Council noticeboard in Church Street. Quite apart from creating a beautiful border along the fence, it's

hoped that the shrubs may also deter any more muntjac deer from getting stuck in the railings – recently one decided to go through the fence rather than over it, with unintended consequences!

In order to comply with Parish Council requirements, we are currently putting together an environmental survey on this area, along with a detailed planting plan and a Health and Safety analysis. In addition, all residents overlooking the site will be consulted before any planting takes place. Once approved, we are going to need a team of volunteers to help, so if you like gardening, or even if you don't but would still like to get involved, please join us in this project. Getting out in the fresh air does us all good, and we hope that this community project will help to bring us together, taking responsibility for our surroundings as well as providing some much-needed social contact (distanced of course!). Details will be posted as soon as we're good to go.

Meanwhile, we've already managed to plant a selection of native species daffodils and bluebells on the village green along the wall by the churchyard, and with luck these will be starting to make an appearance any time now. Also keep an eye open for all the work being done by the Wilbrahams' Environment Group (WEG) who have already been busy planting and creating new wildflower areas. Our villages are going to be buzzing with pollinators this year!



Sadly, we're still not able to organise any Talks, Coffee mornings or Youth Groups, but in the meantime, don't forget that the Covid-19 Support Group are offering virtual coffee mornings by Zoom every Thursday morning (for details please contact Hilary Burton, Tel 07710787917, email hb384@cam.ac.uk). We're very fortunate to live in such a supportive community and the volunteers can help with all sorts of things, whether it's practical help needed, a regular chat on the phone, or some advice about mental health concerns – there are plenty of people more than willing to help, please just ask.

The Well-brahams website also provides links to advice and information which may be useful, www.thewell-

brahams.weebly.com and you can keep up to date on Twitter: (@Wellbrahams) and Facebook: (The Well-brahams).

Until restrictions start to ease, it's so important to keep looking after ourselves – exercising a lot or a little, eating healthily, sleeping well, doing things we enjoy, supporting one another, staying as connected as we can be, and making sure we talk about our worries – all these will help to keep us safe.

Lastly, local artist Helen Clarke has some thoughts about the benefits of creative pursuits in challenging situations, *'Having an absorbing interest in which you can lose yourself completely can be very therapeutic. Painting is one of those activities which not only energises you but also gives you peace. You become distracted from everything happening around you and focus completely on your painting. The calming influence on our emotions can be incredible.'*

For those who want to find out more, Helen recommends a book on this subject, 'Paint Yourself Calm' by international watercolourist Jean Haines.

Stay safe and keep well.

Julia A'Court



Wilbrahams' Gardening Club

Zooming along nicely. We are delighted to report that our Zoom meetings are working well and we have just recently come across a marvelous source of potential contributors from all over the country. It is a surprising bonus, of course, that suddenly we no longer have to worry about the distance the speaker has to travel and the inevitable expense.

We currently have two possibilities for our March, April or May meetings: Katherine Crouch to talk about New Tricks for Old Gardeners and Barbara Segall on The Secret Gardens of East Anglia. Hopefully, by June we may be allowed out again and could even be visiting one of Barbara's secret gardens, or perhaps meeting in the hall again? We can always hope.

Previous Zoom meetings since November have included a brilliant presentation by Robert Brett, Curator of The RHS Garden at Hyde Hall near Chelmsford - somewhere that we shall have to visit. December was a Zoom Christmas party, while in January we had Darren Lerigo from Modern Mint putting us straight, very entertainingly, about British gardens, followed in February with our own Jeremy Davis with revelations about the Wonderful World of Beans.

The majority of club members have stayed with us for all the Zoom meetings, and we are always happy to hear from new people who might like to join, or maybe log into one of our meetings to see what they think of us.

Contact: Jackie Beadsmoore: Tel: 01223 880 889 or E: jackiebeadsmoore@icloud.com

Little Wilbraham and Six Mile Bottom Parish Council

Firstly we hope you and all your families are keeping well. The council now meets every month on the second Thursday via Zoom at present. All welcome to attend.

Hopefully this will not be needed, but in case it is the defibrillator in Six Mile Bottom has now moved to the wall of the Spar shop.

Unfortunately the work to unblock the drains in Little Wilbraham hasn't taken place as thought; therefore county councillor John Williams is chasing this up.

The council continues to work closely with the Covid-19 volunteer group to make sure all residents that need help receive it. Online social events such as 'Know your neighbour' have been successful and more will be arranged.

At a meeting of 14th January 21 the council agreed not to increase the precept this year as we are aware it has been a difficult year for many during the pandemic.

Following positive feedback from the survey of residents, the council are in the process of applying for grants for a Multi-Use Games Area on the recreation ground in Little Wilbraham. This can be used for sports such as tennis and badminton. You can read about the proposal and survey on the village website.

The Parish council would like to thank councillor Claire Daunton for her persistence in chasing the relevant parties responsible for the sewage/water issue.

For any further information on any of the above please contact the clerk at clerk@horningsea.net

Best wishes to all.

Little Wilbraham and Six Mile Bottom Parish council

Regular Advertisers Contact Details



Andy's Fulbourn Garage

Unit 3, Station Yard
Wilbraham Road, Fulbourn,
Cambridge CB21 5ET
01223 880747

Chapel Dental

84, Angle End
Great Wilbraham, CB215JG
01223 811844
www.chapel.dental

ColourFence Cambridge

01223 811160
www.colourfencecambs.co.uk

Colours of Dance

Imogen Knight
182 Histon Road
Cambridge CB4 3JP
01223 778268

David Sooty Sadler

01638 552573 / 07783912234
sootysad@hotmail.com
www.sootysad.co.uk

Ernest Doe

Wilbraham Road
Fulbourn CB21 5EX
01223 880676

Essential Health

34 Angle End
Great Wilbraham CB21 5JG
01223 881889 / 07786 067077
jbaysham@hotmail.com
www.juliettebaysham.co.uk

Fisher Carpets

01223 811321 / 07879494685

Fulbourn Feline Services

07900 213245
info@fulbournfelines.co.uk
www.fulbournfelines.co.uk

J & J Drake

Unit 24
Hall Barn Road Industrial Estate
Hall Barn Road, Isleham
Cambridgeshire, CB7 5RJ
01638 781567
enquiries@jandjdrake.co.uk

My Village Handyman

07500876376 / 01223 881700
info@myvillagehandyman.com
myvillagehandyman.com

PRE Heating Services

Phil Evans
07500800441 / 01638 721343
preheatingservices@gmail.com

Rothwells

Oliver and Max Campbell
01223 832928
www.Rothwells.biz

Secure Storage

07841930065
admin@camstorage.co.uk

SMB GAS

01638 570046
mandy@sixmilebottomshoot.co.uk

The Upholstery Barn

Anne McGarvey
07986 027807
E: camupholsterybarn@outlook.com

Tutor

Anne-Marie McCubbin
01223 811939
info@wingstoflyeducation.co.uk

Wheelie Fresh Bins

01223 277747
www.wheeliebinfreshbins.com

Wilbraham Boiler Services

Mark Taylor
01223 812024 / 07906691726

Woodland Wishes

4 High Street
Fulbourn
Cambridge CB21 5DH
01223 880002

Molly's Beer Delivered

Back in June last year, Martin inspired me to produce a 'pome' for the Choir while I was going round the village with my weekly beer delivery (I realised thanks to him that I was usually humming 'Molly Malone' on Fridays as I went around with my barrow, so I've taken liberties with the other 'Tart with a Cart', and added another verse).

I'm still to be found clanking round most Fridays with beer deliveries, although the Jam production is on hold till next year (over £400 more has gone to animal charities since October, as always thanks for your support, over £1300 now raised since last April). And of course for drinking beer!!

"A Lockdown Molly Malone"

(with apologies to the Irish, and it will scan if you miss out the words in italics!)



I trundle round here
 With a barrowload of beer
 From Moonshine on Fridays when I'm all alone
 As I wheel my wheelbarrow
 Through the streets broad and narrow
 Crying "*polyboxes* and bottles all ready to go"
 All ready to go,
 All ready to go
 Crying '*Polyboxes* and bottles, all ready to go"

I bring round the jam *and marmalade*
 To feed Wilbraham
 Your money is feeding the animals too
 As I wheel my wheelbarrow
 Through the streets broad and narrow
 Crying "marmalade and jam and some chutney to go"
 Some chutney to go
 Some chutney to go
 Crying "marmalade and jam and some chutney to go"

Don't want to be a moaner
 But I'm scared of Corona
 So no-one please come anywhere that's too near
 As I wheel my wheelbarrow
 Through the streets broad and narrow
 Crying 'please keep your distance where I want to go'
 Where I want to go
 Where I want to go
 Crying 'please keep your distance where I want to go'

My Choir friends are singing
 But my Zoom is minging
 My Thursdays are sad and I drink all alone
 So I wheel my wheelbarrow
 Through the streets broad and narrow
 Crying 'Thank God it's Friday' I'll wave then I'll go
 I'll wave then I'll go
 I'll wave then I'll go
 Crying 'Thank God it's Friday' I'll wave then I'll go



The weather's dark and manky
 My empties are clanking
 The Hall lights are on but nobody's at home
 So I wheel my wheelbarrow
 Through the streets broad and narrow
 Crying 'Springtime is coming' ... *not* much longer to go
Not much longer to go
Not much longer to go
 Crying 'Springtime is coming' ... *not* much longer to go

Judy Whybrow

Solutions

Wordsearch

GEUM, IRIS, PINK, ROSE, DAISY, HOSTA, LILAC, TULIP, VIOLA, CROCUS, ORCHID, BEGONIA, FREESIA, CLEMATIS, DAFFODIL, LAVENDER, PRIMROSE, SNOWDROP

Easter Egg Hunt : SPRINGTIME