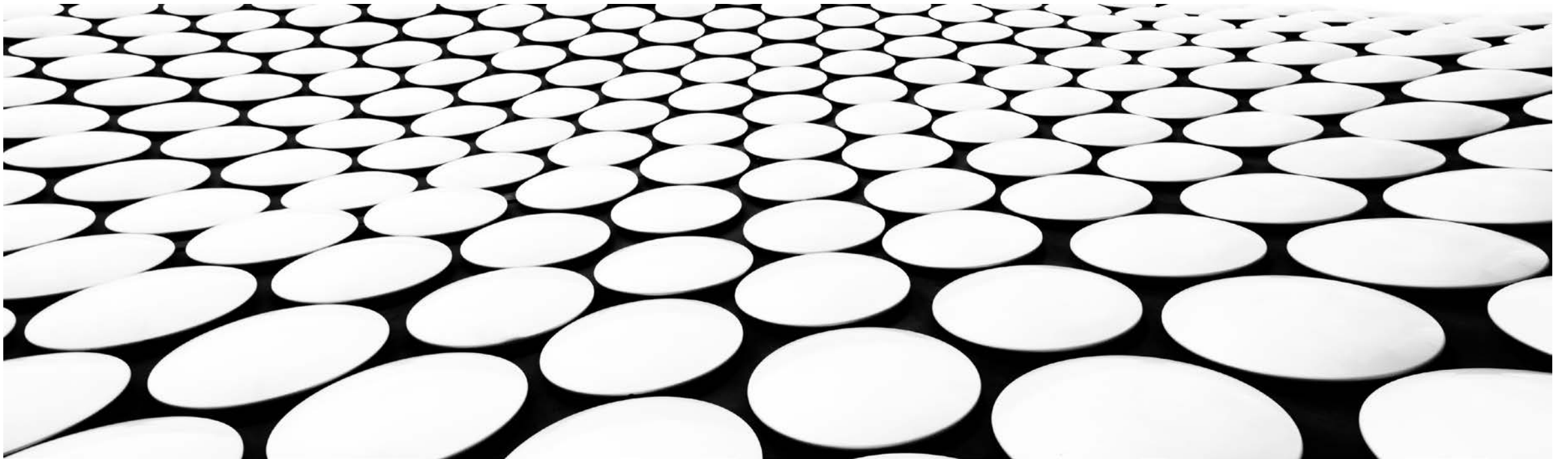

GIGABIT VOUCHER SCHEME FOR RESIDENTS

GREAT AND LITTLE WILBRAHAM INITIATIVE





GIGABIT BROADBAND VOUCHER SCHEME

ARE YOU **READY?**

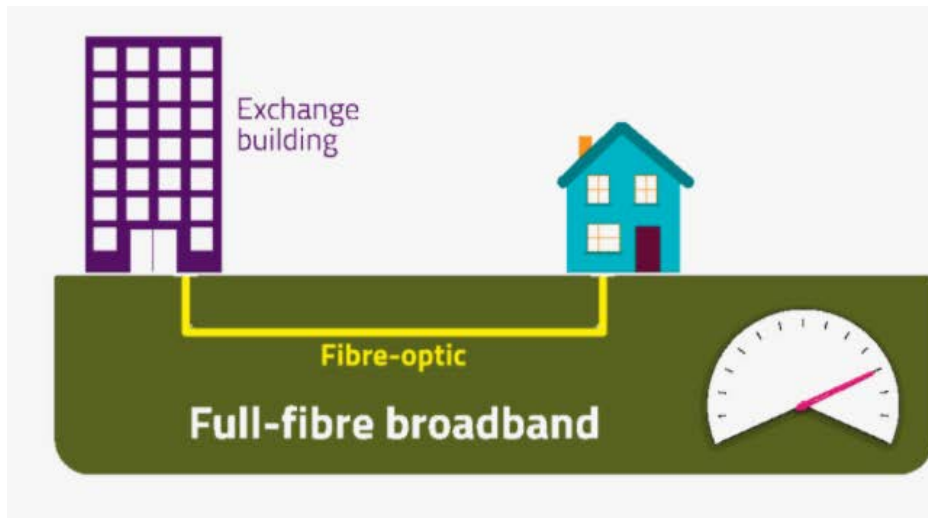
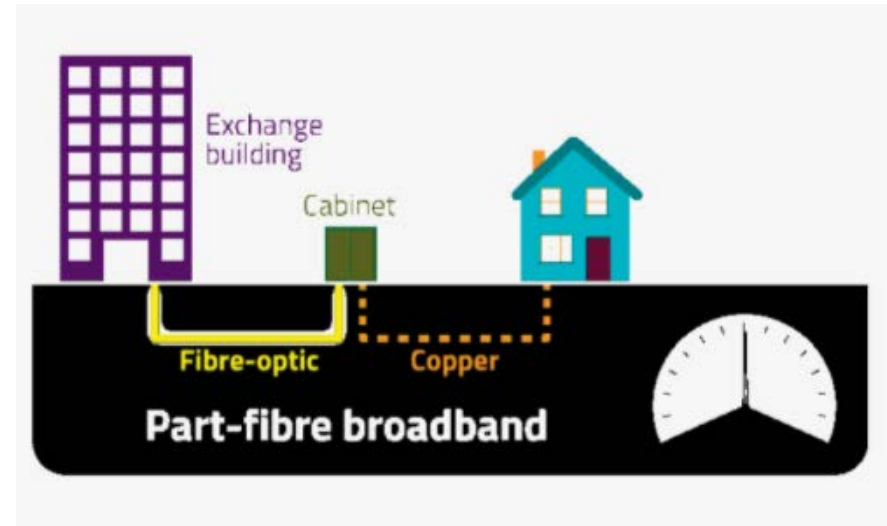
PART OF THE LOCAL FULL FIBRE NETWORKS PROGRAMME



Department for
Digital, Culture
Media & Sport

WHAT IS GIGABIT (1 GBPS)?

Current “SuperFast” infrastructure in GW and LW broadband speeds between 10 to 70 MB/s



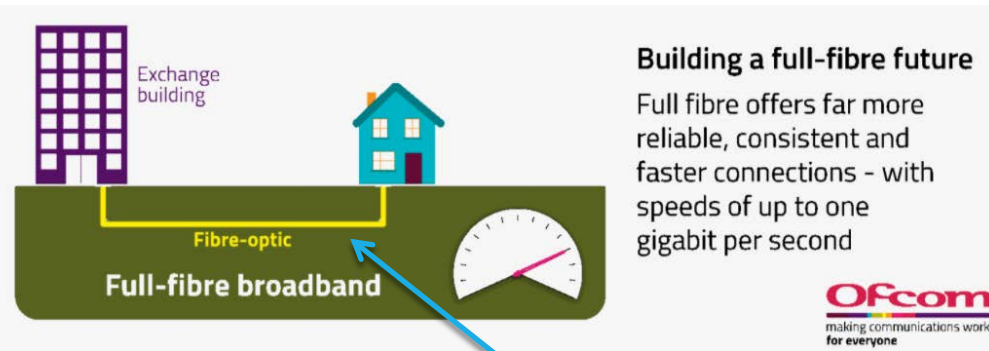
Building a full-fibre future

Full fibre offers far more reliable, consistent and faster connections - with speeds of up to one gigabit per second

Hyperfast/Gigabit broadband offers speeds up to 935 Mbps or 1 Gbps

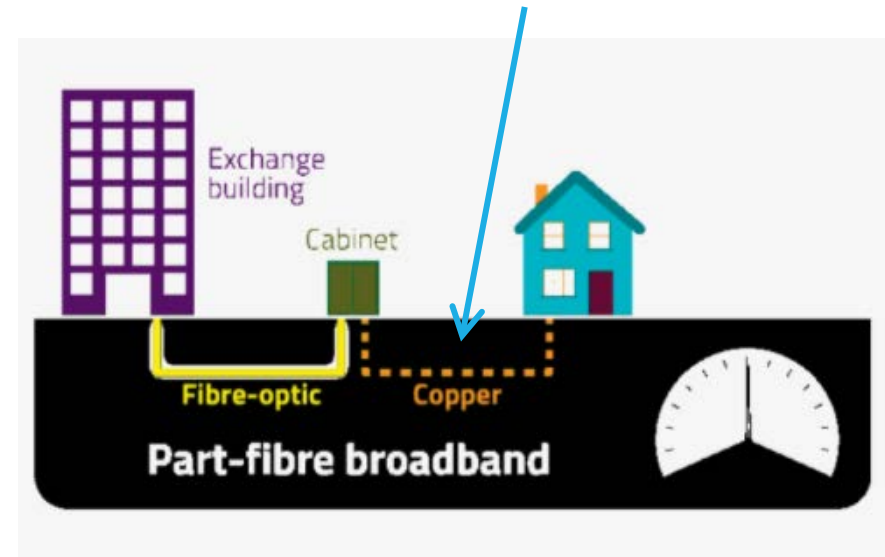
WHAT IS GIGABIT BROADBAND (1 GBPS)?

Changing supplier from current to another provider will not give you faster/more reliable speed as the same copper is used!



Fibre optic connection to the home
FTTH (Fibre to the Home)

Copper infrastructure is the constraint
FTTC (Fibre to the Cabinet)



WHAT IS GIGABIT VOUCHER SCHEME?

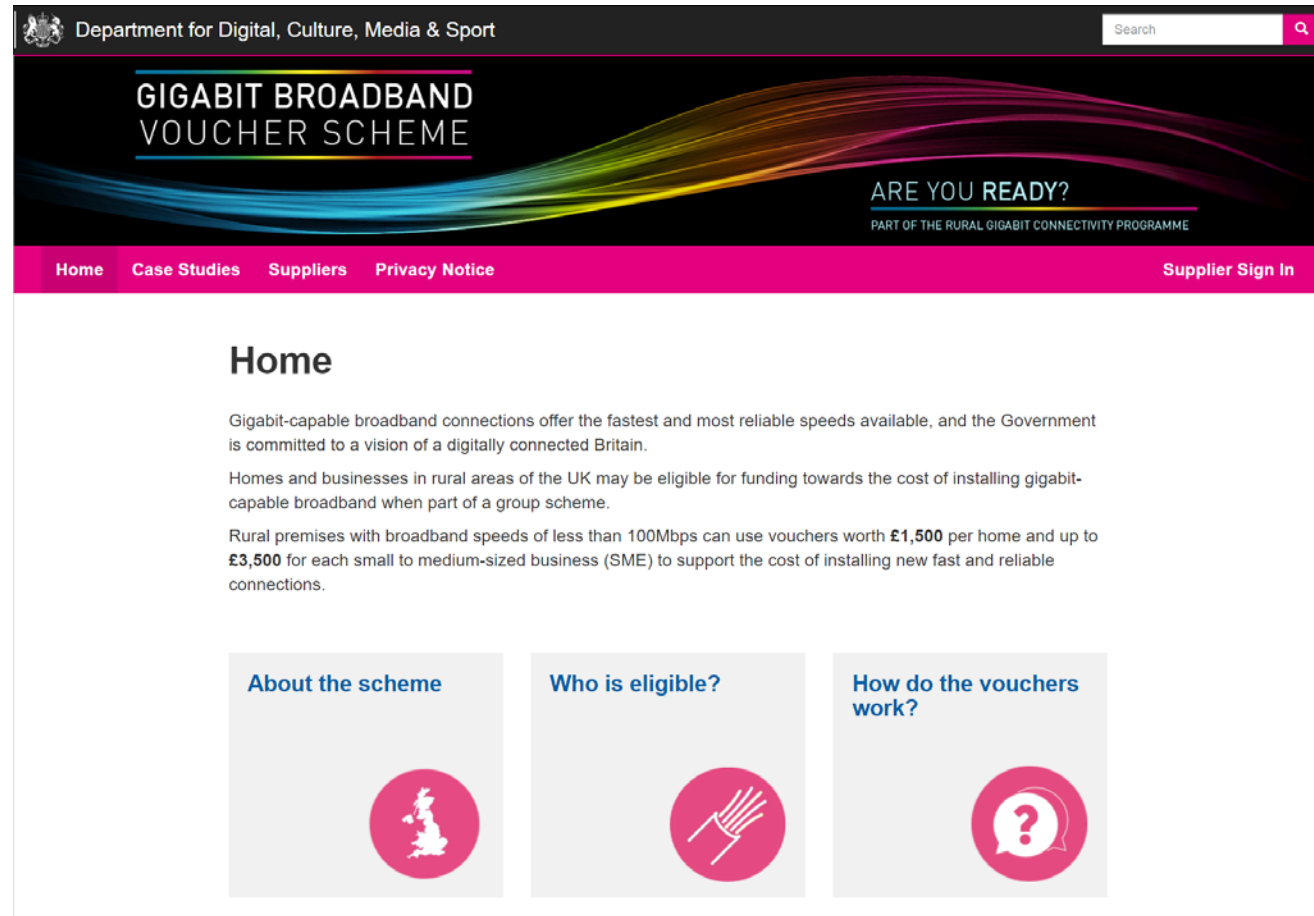
£200m initiative by the government to build *rural* Gigabit Broadband infrastructure

Objective:

Connect rural premises with broadband speeds of less than 100Mbps. Households/businesses can use vouchers to support the cost of installing new fast and reliable connections.

Link:

[Gigabit Vouchers – Department for Digital, Culture, Media & Sport](#)



The screenshot shows the homepage of the Gigabit Broadband Voucher Scheme website. At the top, there is a navigation bar with the Department for Digital, Culture, Media & Sport logo and a search bar. The main header features the title "GIGABIT BROADBAND VOUCHER SCHEME" in white text on a dark background, with a colorful, wavy graphic below it. To the right of the graphic, it says "ARE YOU READY?" and "PART OF THE RURAL GIGABIT CONNECTIVITY PROGRAMME". Below the header is a pink navigation bar with links for "Home", "Case Studies", "Suppliers", "Privacy Notice", and "Supplier Sign In". The main content area is titled "Home" and contains introductory text about gigabit-capable broadband connections and eligibility criteria. At the bottom, there are three grey boxes with icons and text: "About the scheme" (with a UK map icon), "Who is eligible?" (with a hand icon), and "How do the vouchers work?" (with a question mark icon).



WHAT IS GIGABIT VOUCHER SCHEME?

“Voucher”- incentive from government to sign up for the scheme:
£1,500 per household and £3,500 per business

Plus additional funds from Connecting Cambridgeshire
£1,500 for households and £1,500 for business

Total potential voucher
£3,000 per household and £5,000 per business



WHAT IS GIGABIT VOUCHER SCHEME?

Funds available from vouchers will be calculated:

Number of households x voucher value £1,500

Number of businesses x voucher value £3,500

These funds will be made available to the company (for example Cambridge Fibre) that will build the fibre optic infrastructure (lay the fibre optic cables to our villages and resident homes etc.)

It is essential to maximise the number of residents and businesses to sign up so enough funds are generated from vouchers to make the project feasible

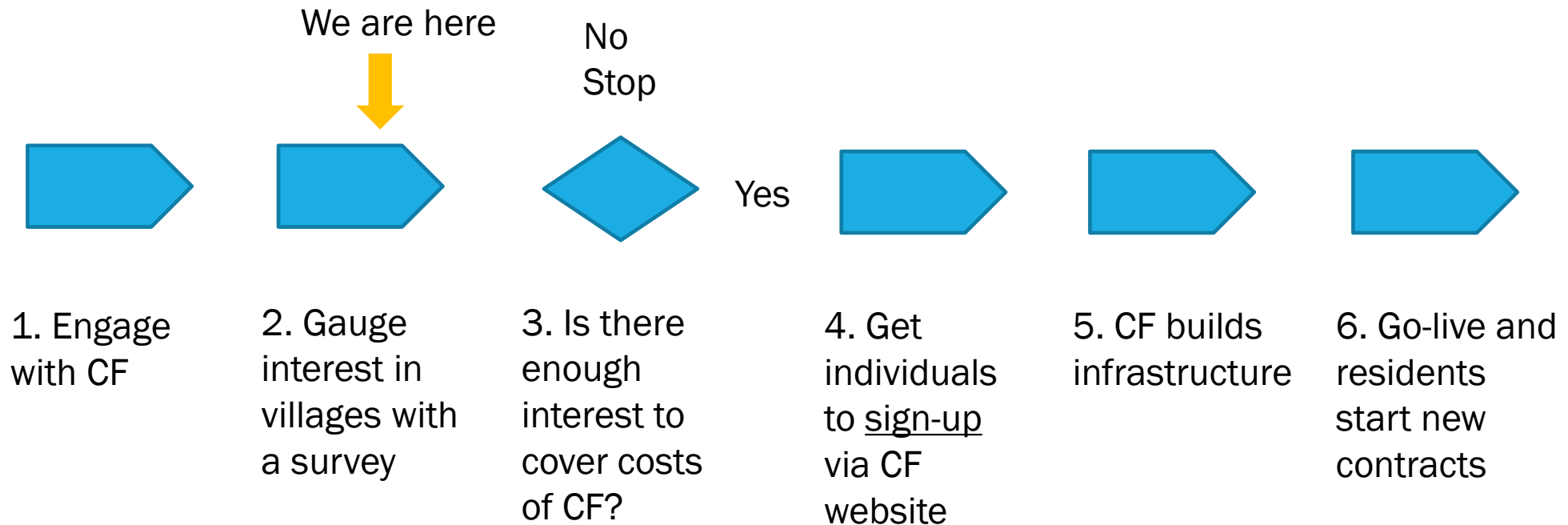
A “business” can be a home-based company (ie accepted proof is you tax code as self employed)



COMMUNITY BENEFITS OF GIGABIT BROADBAND

- Flexible working
- Reliability and speed guarantee at peak hours
- Social value: increased social engagement, online services
- Employment benefits: remote working
- Makes our villages (even more!) desirable and attractive places to live
- has proven to increase property value
- New business start-ups
- Healthcare: Video consultations
- Reduce carbon emissions

WHAT ARE THE STEPS?



Example:
CF: Cambridge Fibre

A FEW QUESTIONS, ANSWERED

- Q: Will this cost me anything?
 - A: No. By signing up, you will avail the government voucher (£1,500 for home and £3,500 for business) assigned to you and this will be used towards the cost of building the infrastructure.
- Q: Can I sign up in the future, after the infrastructure is built?
 - Yes, but it will cost you £125 (2 year contract) or £225 (1 year contract). Costs may be higher if your home is far from Fibre that has been laid down.
- Q: What speeds will be available after we get Gigabit broadband and will they be guaranteed?
 - A: Speeds offered by CF are 200 MB/s, 400 MB/s, 600 MB/s or 935 MB/s. Speeds will be guaranteed or very close to it.
- Q: Will residents have to sign a new contract?
 - A: Yes. This will be a 12 or 24 month contract (see next slide for examples). Payments will be taken only once the system is live.
- Q: how do residents sign up?
 - A: Orders are taken via the website, CF will request vouchers on the customer behalf.

Note:

Answers are from Cambridge Fibre

A FEW QUESTIONS, ANSWERED

- Q: Can we change our mind?
 - A: Customer can change their mind until CF start building the infrastructure.
- Q: Can the existing BT cabinets in LW and GW be used?
 - A: No. CF will use the ducts and poles from Openreach to lay their own fibre optical cables to the village to each home/business.
- Q: Will the roads need to be dug up?
 - A: No, but CF do fix poles and ducts for Openreach where they are broken or dangerous. There are a very small percentage of streets Openreach has no ducts or poles and buried copper cables directly. These will be investigated on a case by case basis.
- Q: Will there be competition in the future, so customers may get Gigabit broadband from suppliers other than CF?
 - A: Not immediately, hence the voucher scheme. It is likely that it will be BT and “one other” for rural areas. The good news is that CF plans to offer connectivity to other suppliers.

Note:

Answers are from Cambridge Fibre

A FEW QUESTIONS, ANSWERED

TrueFibre® Residential Broadband Packages

Home Basic

From £ 29.00 / Per Month

- ✓ 200Mbps Download
- ✓ 100Mbps Upload
- ✓ Ultra-low latency
- ✓ Unlimited Usage
- ✓ 24/7 Support

Choose this package

Home Standard

From £ 29.00 / Per Month

- ✓ 400Mbps Download
- ✓ 200Mbps Upload
- ✓ Ultra-low latency
- ✓ Unlimited Usage
- ✓ 24/7 Support

Choose this package

Home Premium

From £ 29.00 / Per Month

- ✓ 600Mbps Download
- ✓ 300Mbps Upload
- ✓ Ultra-low latency
- ✓ Unlimited Usage
- ✓ 24/7 Support

Choose this package

RECOMMENDED

Home Ultimate

From £ 49.00 / Per Month

- ✓ 935Mbps Download
- ✓ 500Mbps Upload
- ✓ Ultra-low latency
- ✓ Unlimited Usage
- ✓ 24/7 Support

Choose this package

Note:

Pricing from Cambridge Fibre website – link below

[Residential Full-Fibre Broadband – Cambridge Fibre Networks Ltd](#)

A FEW QUESTIONS, ANSWERED

24 Month Contract – Special Offer

- Packages are discounted for the first 12 months
- Upgrade your package at any time
- Freedom to downgrade your package at any time in the second year or after.

How it works in practice

When you place your order, you choose your preferred package for the first 12 months at a discounted rate.

At the end of month 12, unless you choose to upgrade or downgrade, pricing reverts to the standard rate for your package.

Example 1 – Downgrade in months 13-24:

The customer chooses Home Premium (600Mbps) in year one, and pays the discounted rate of £29 per month for the service.

At the end of the first year, the customer chooses to downgrade her service to Home Standard (400Mbps) at the standard rate of £39 per month.

Example 2 – Home Ultimate for full 24 months:

The customer chooses Home Ultimate (935Mbps) in year one, and pays the discounted rate of £49 per month for the service.

At the end of the first year, the customer chooses to keep the Home Ultimate service and transitions to the standard rate of £69 per month.

Note:

Pricing from Cambridge Fibre website

TIMELINE

